



isel® *From Components to Systems*

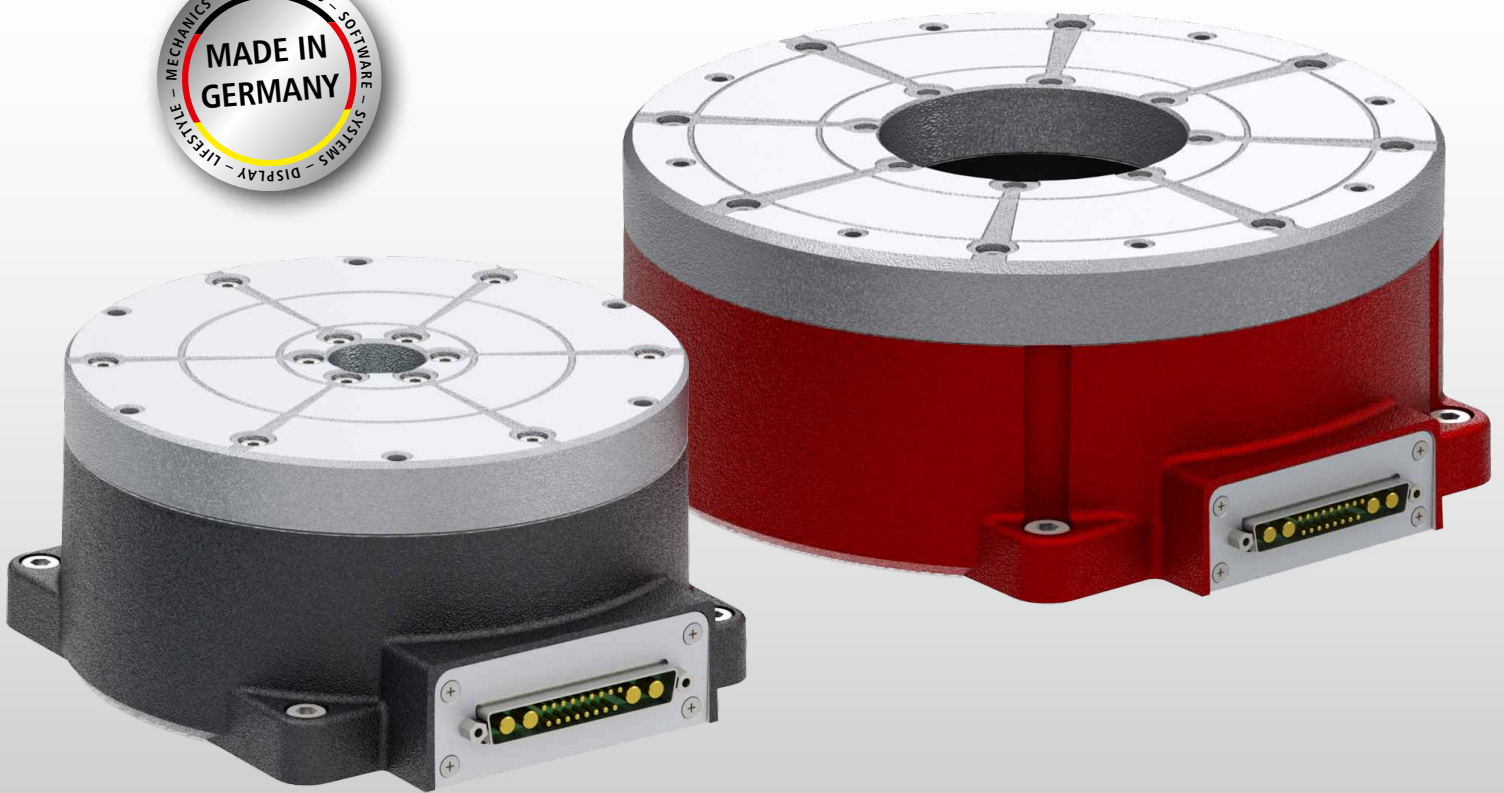
NEW

TORQUE MOTORS iTM 180 and iTM 240

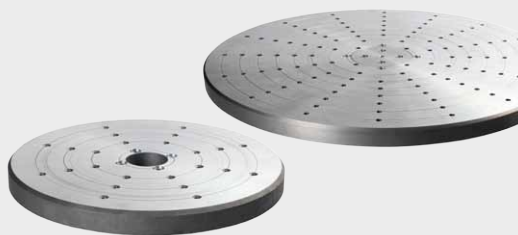
Due to the motor construction with its large hollow shaft the Direct-Drive Rotary motor series provide a outstanding torque density with a maximum resolution of 3.440.000 increments per revolution. The Direct-Drive Rotary motors ensure a save use in a wide range of applications such as CNC Systems, turning units, rotaring / swivel units, where high rigidity, running stability and zero backlash is required.

The drives are made at aluminum die-cast housing with an aluminum die-cast plate, a hollow shaft of steel with two ball bearings, a magnetic ring with coil package as well as an incremental or absolute magnetic measuring system. The nominal voltage is 48 V or 310 V and can be controlled with corresponding output stages.

The Direct-Drive Rotary motors are ideally suited for turning units and rotaring / swivel units.



Aluminum damping disk Ø 250 / 500 mm



Aluminum connection angle



Rotary and swiveling unit (iT180 and iT240)



...for best quality and price...

TORQUE MOTORS iTM 180 and iTM 240

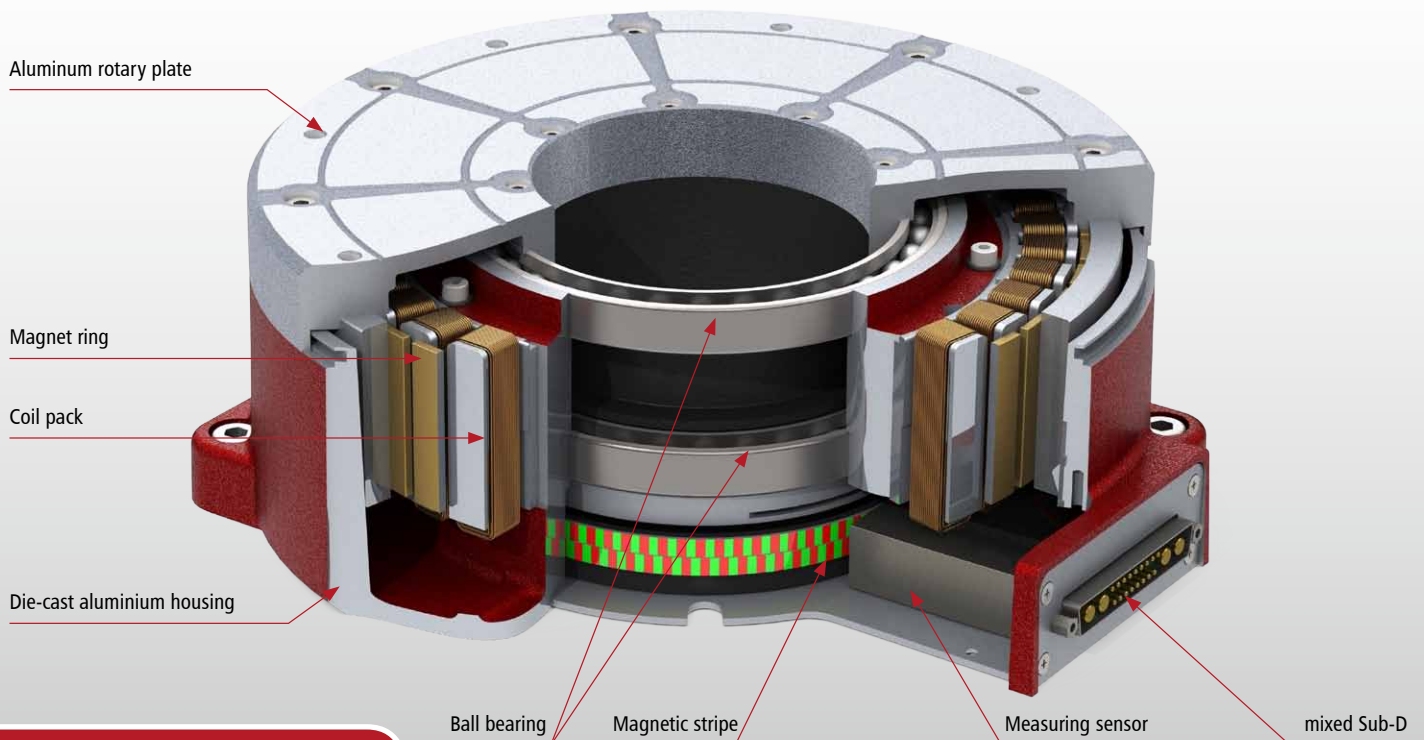
Features:

- Motor sizes L 199/242 x W 188/253 x H 92/95 mm with hollow shaft \varnothing 45 mm and \varnothing 90 mm
- Max. axle load / radial load 3100 N / 4000 N max. speed 155 and 160 rpm.
- peak torque iTM 180 / 240 30 Nm / 50 Nm (48 V) and 55 Nm / 75 Nm (320 V)
- Measurement system incremental or absolute max. resolution 3440000 and or 20 Bit (1048576)

Accessories:

- Die-cast aluminum clamping plate \varnothing 250 mm and \varnothing 500 mm
- Connecting angle made from die cast aluminum for iTM 180 and iTM 240
- 48V and 320V output stages suitable for Direct-Drive Rotary motors
- Connection cable, 3m length with connector (mixed Sub-D)

Sectional representation iTM 240



For further information:
+49 (0) 36964 84-516 and www.isel.com

Power amplifier 48 V and 320 V



Hollow shaft with 2 ball bearings



Measuring board with magnetic sensor

