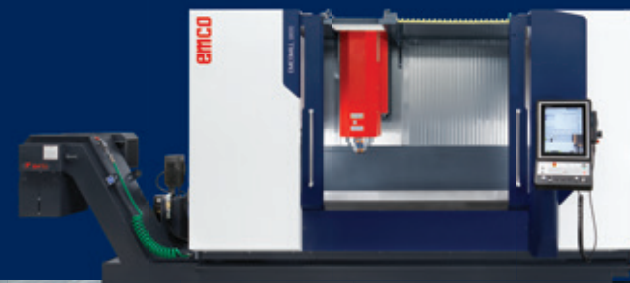


emco

EMCOMILL 1800 / 1200 / 750

3-axes CNC machining centres

EMCOMILL SERIES 750 1200 1800



PERFORMANCE AND FLEXIBILITY WRAPPED IN A COMPACT DESIGN

The flexible, vertical CNC milling machines for 3-axis milling operations have a compact machines layout, a travel of 1800 / 1200 or 750 mm in the X-axis, 610 mm in the Y-axis, the latest control technology, as well as a very attractive price-performance ratio. The solid fixed table and large work area enable the machining of heavy workpieces weighing up to 2 000 kg.

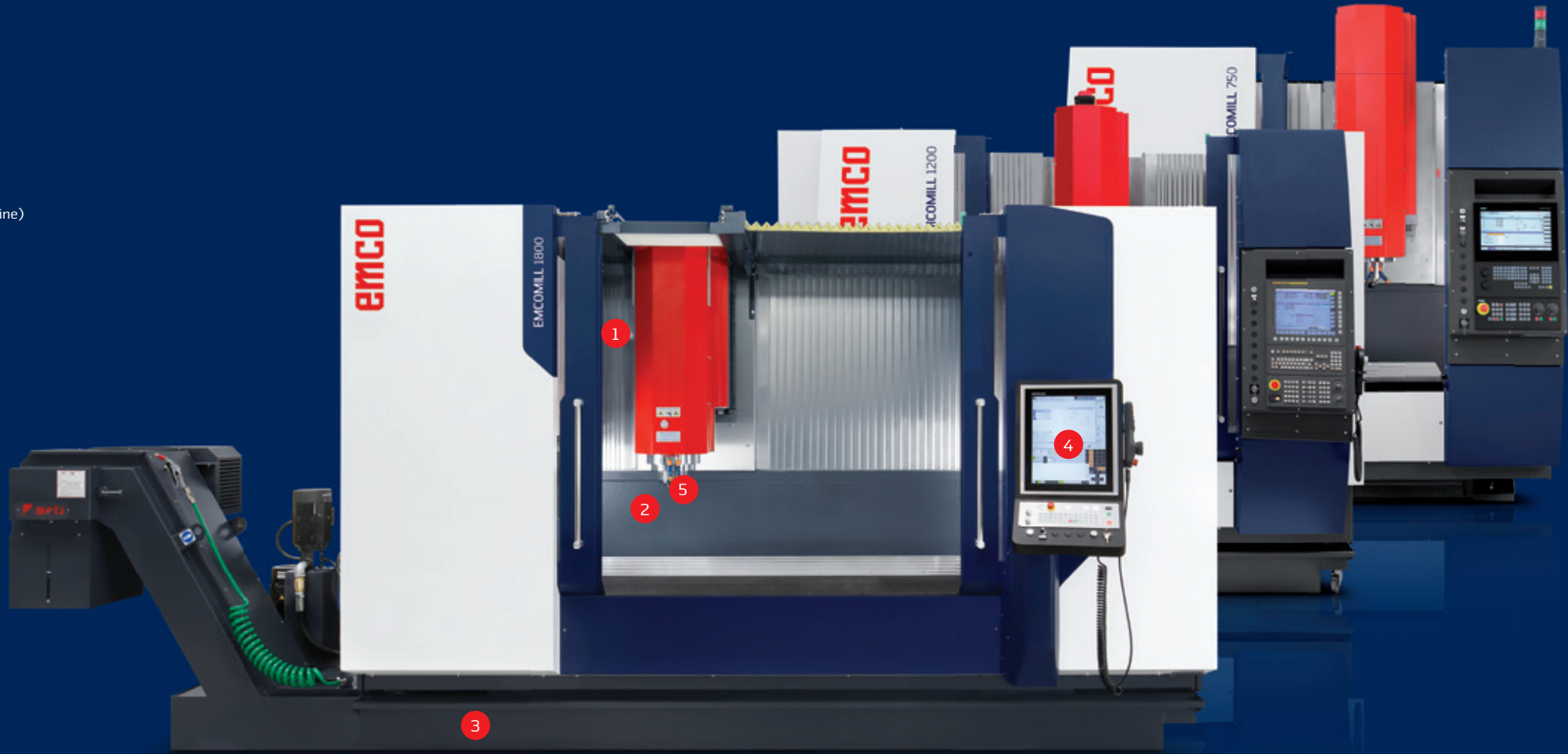


Reverse mould
(Aluminium)

- 1 TOOL MAGAZINE**
/ Tool drum with 30, 40 or 60 stations (chain magazine)
/ Quick release with double-gripper

- 2 WORK AREA**
/ Large machine doors
/ Optimum view into the work area
/ Protected, elevated guide systems
/ Fixed table for high workpiece weights

- 3 MACHINE BASE**
/ Machine bed made of a special ribbed welded steel construction



- 4 CONTROL**
/ Cutting-edge digital control technology
/ SIEMENS 828D with ShopMill
/ Heidenhain TNC620
/ FANUC Oi-MF with Manual Guide i and 3D-graphic for EMCOMILL 1200 / 750
/ Colour monitor

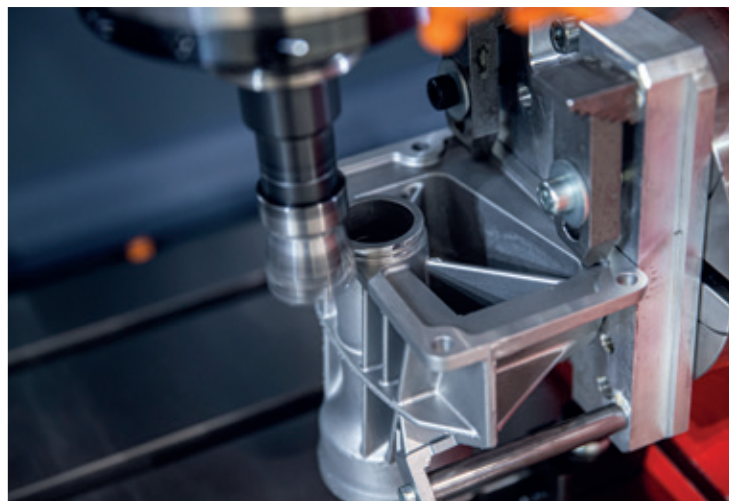
- 5 SPINDLE**
/ Mechanical spindle 12 000 rpm
/ Water-cooled motor spindle 15 000 rpm

Machines with optional equipment

TECHNICAL HIGHLIGHTS



APPLICATION AREAS



The EMCOMILL series is equipped with state-of-the-art control technology, either Siemens 828D with ShopMill, Heidenhain TNC 620 or Fanuc Oi-MF with Manual Guide i (Fanuc: EMCOMILL 1200 / 750) are available. The control panel includes a swivel function for an ergonomic working position.



DESIGN

The new EMCOMILL series is designed as a moving column milling machine. The machine bed is made in welded steel, optimised by FEM analysis. The X-, Y- and Z-slides are made in cast iron.



MACHINING TABLE

Cast iron fixed table with T-grooves, on which clamping systems can be installed. Due to the rigid table, automation solutions with robot or pallet changer can be perfectly integrated. Large-dimensioned workpieces can be machined, achieving high accuracy thanks to the moving column technology.

HIGHLIGHTS

- / High-performance milling spindles
- / Flexible tool system
- / Large work area with wide machine doors
- / Solid fixed table for workpiece weights up to 2 000 kg
- / State-of-the-art control technology from Siemens, Heidenhain, Fanuc (Fanuc: EMCOMILL 1200 and 750)
- / Large number of options
- / Best price-performance ratio
- / Made in the Heart of Europe



BALL SCREWS

Grease-lubricated (central) ball screws and linear roller guides (45 mm in the X and Y axes; 35 mm in the Z-axis) offer high resistance against mechanical stress and a high, zero-vibration traverse speed. On the picture, machine equipped with glass scales (option).



TOOL MAGAZINE

The tool magazine has 30 stations (40/60 as option). The tool management with random tool selection uses a double-gripper that allows to make a pre-search of the tool during the machining cycle. Alternatively it is possible to utilise the tool magazine with a fixed place for big-dimensioned tools, leaving the two adjacent stations free.



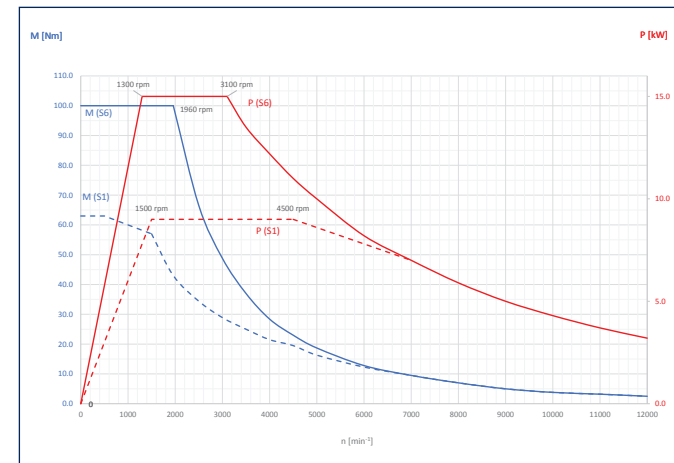
SOLID STRUCTURE

Optimised on the basis of FEM analyses and made of cast iron, the guide retainers, carriages and spindle carriers ensure maximum stability and perfectly finished workpieces.

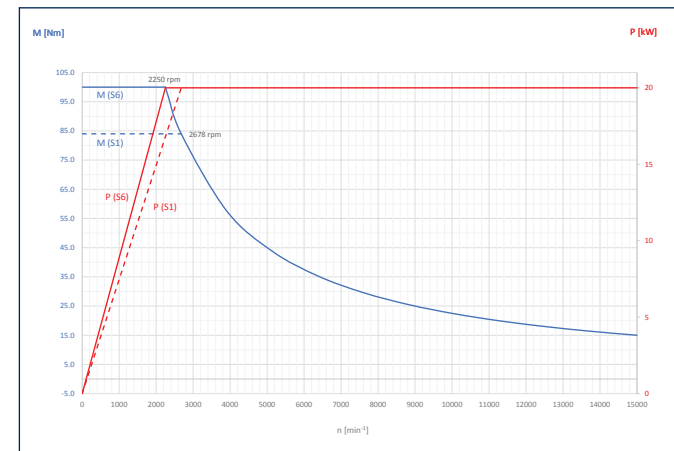
TECHNICAL HIGHLIGHTS



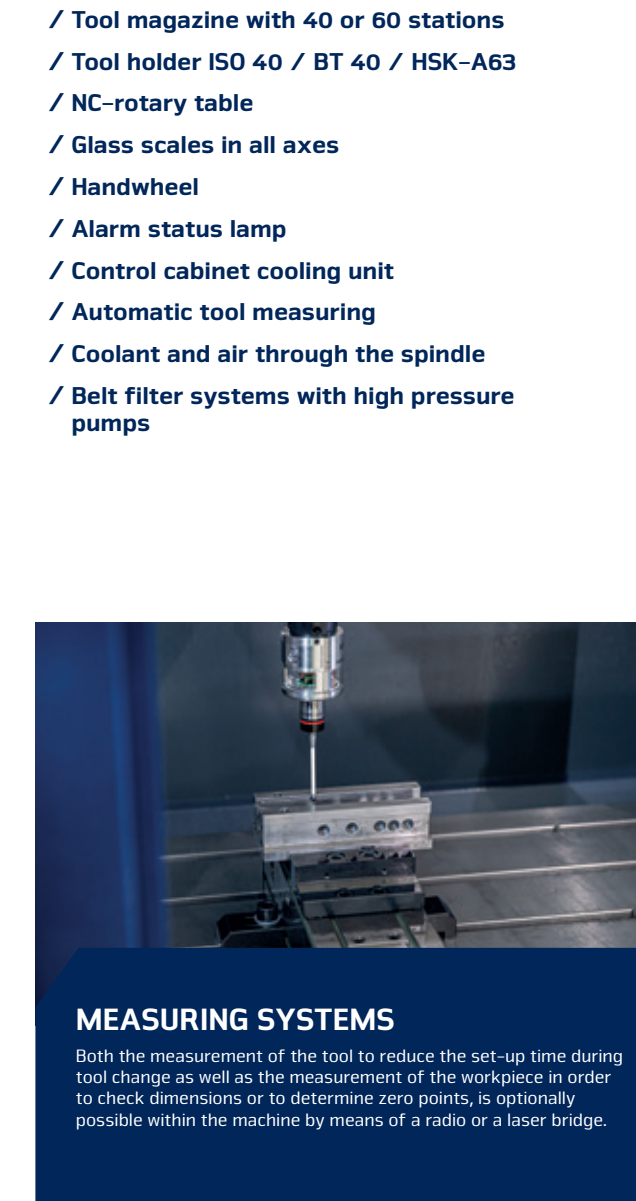
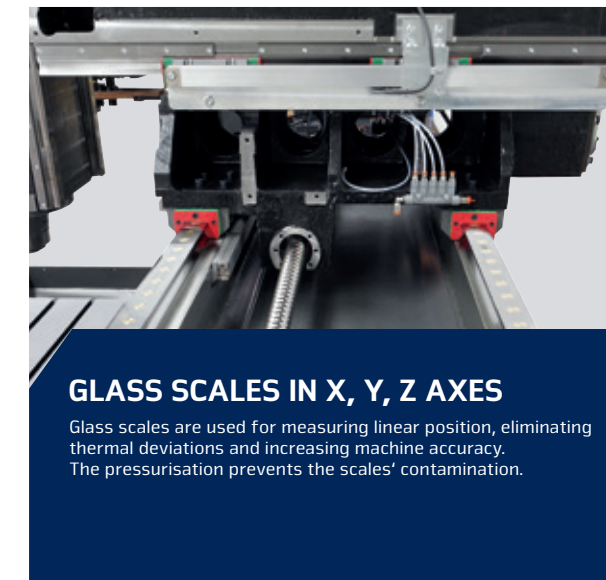
Power and Torque



Mechanical spindle



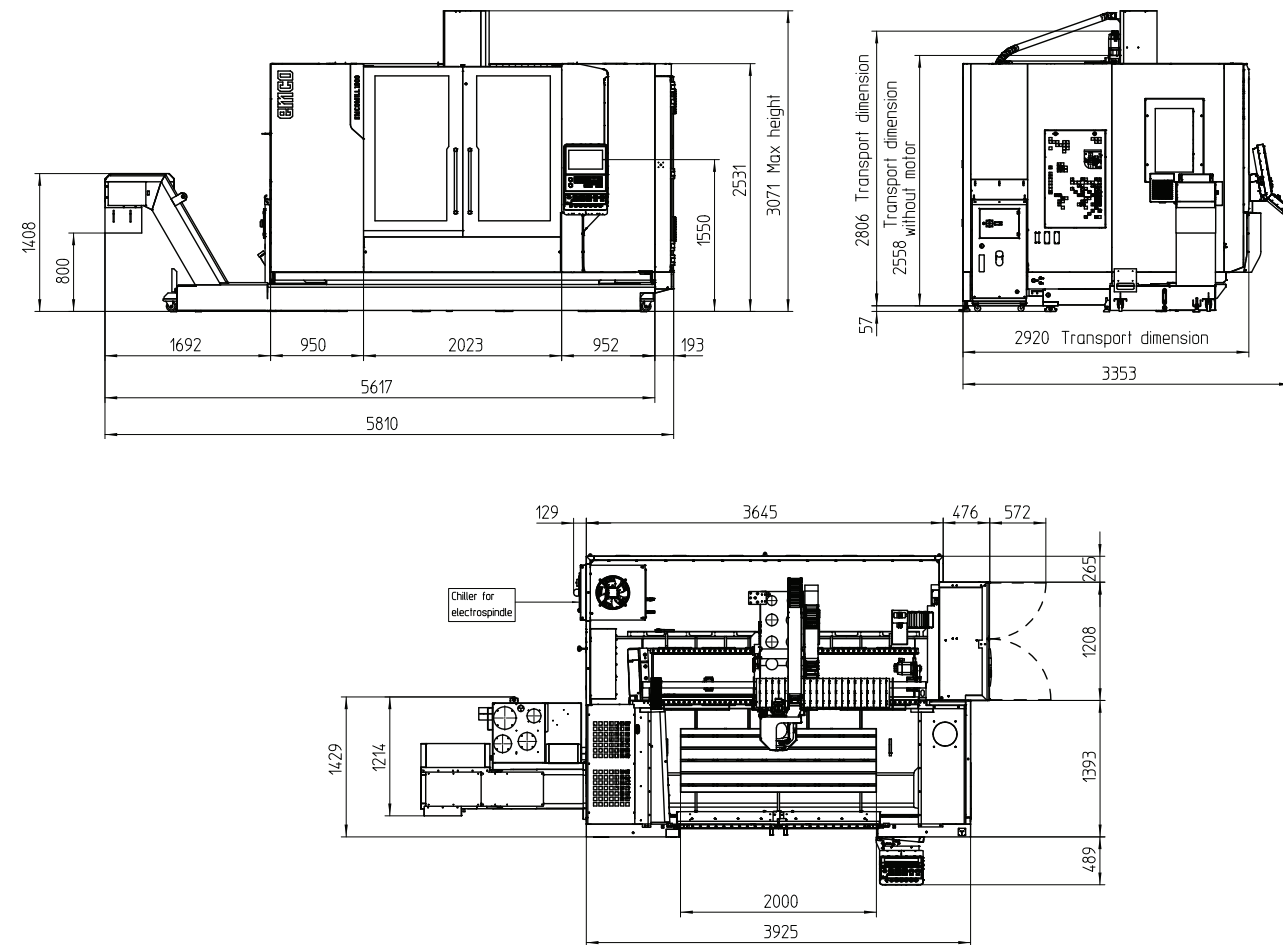
Motor spindle



- / Tool magazine with 40 or 60 stations
- / Tool holder ISO 40 / BT 40 / HSK-A63
- / NC-rotary table
- / Glass scales in all axes
- / Handwheel
- / Alarm status lamp
- / Control cabinet cooling unit
- / Automatic tool measuring
- / Coolant and air through the spindle
- / Belt filter systems with high pressure pumps

INSTALLATION PLAN

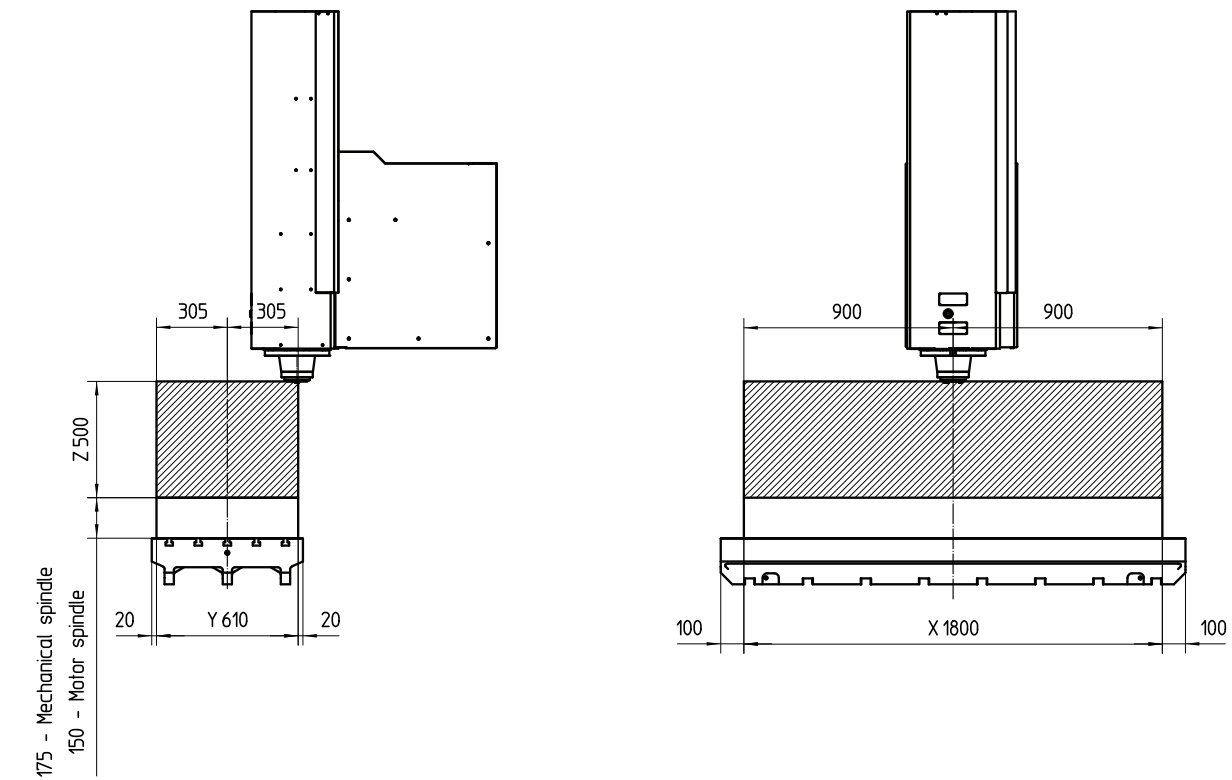
EMCOMILL 1800



Details in millimeters

WORK AREA

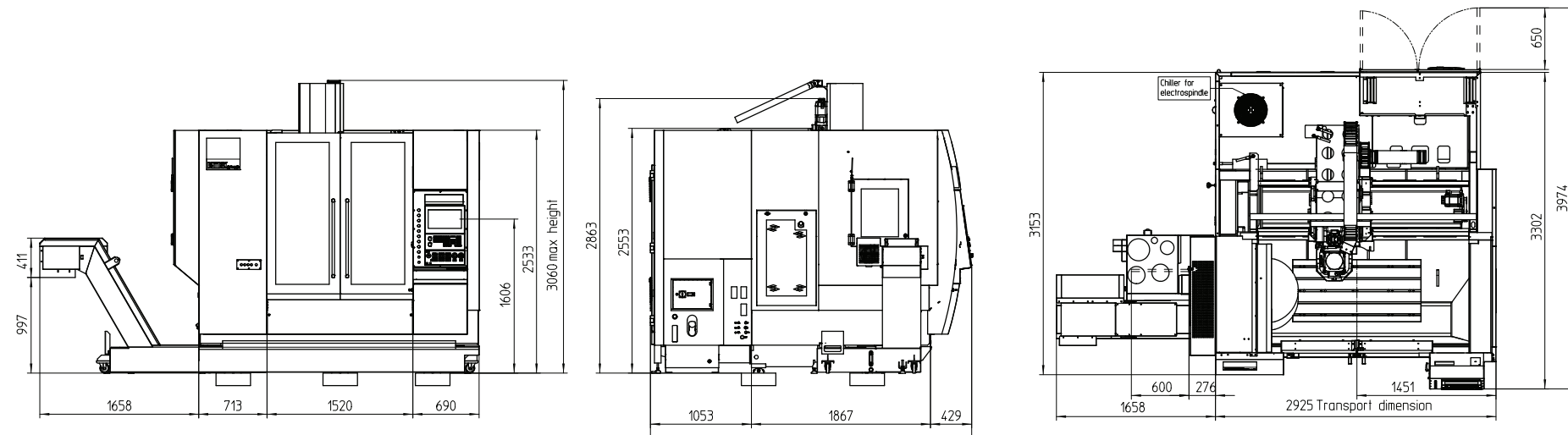
EMCOMILL 1800



Details in millimeters

/ INSTALLATION PLAN

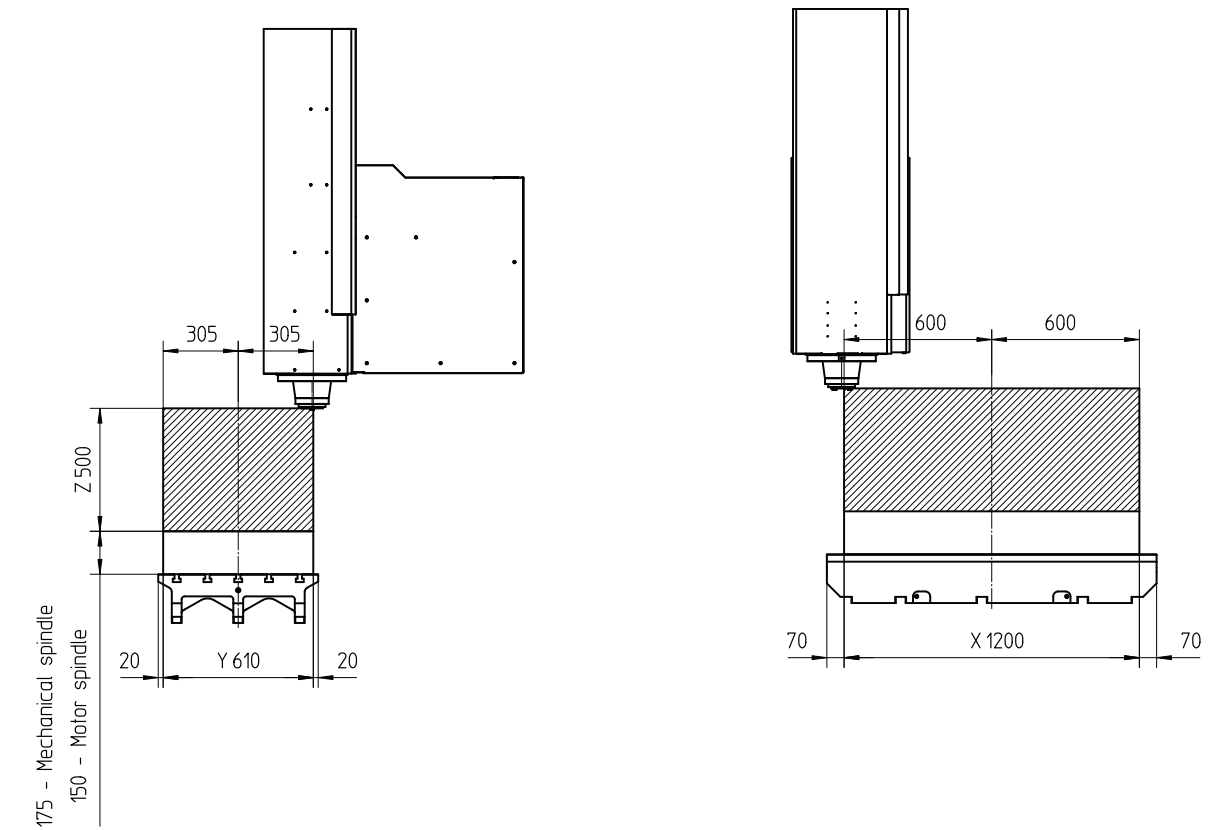
EMCOMILL 1200



Details in millimeters

/ WORK AREA

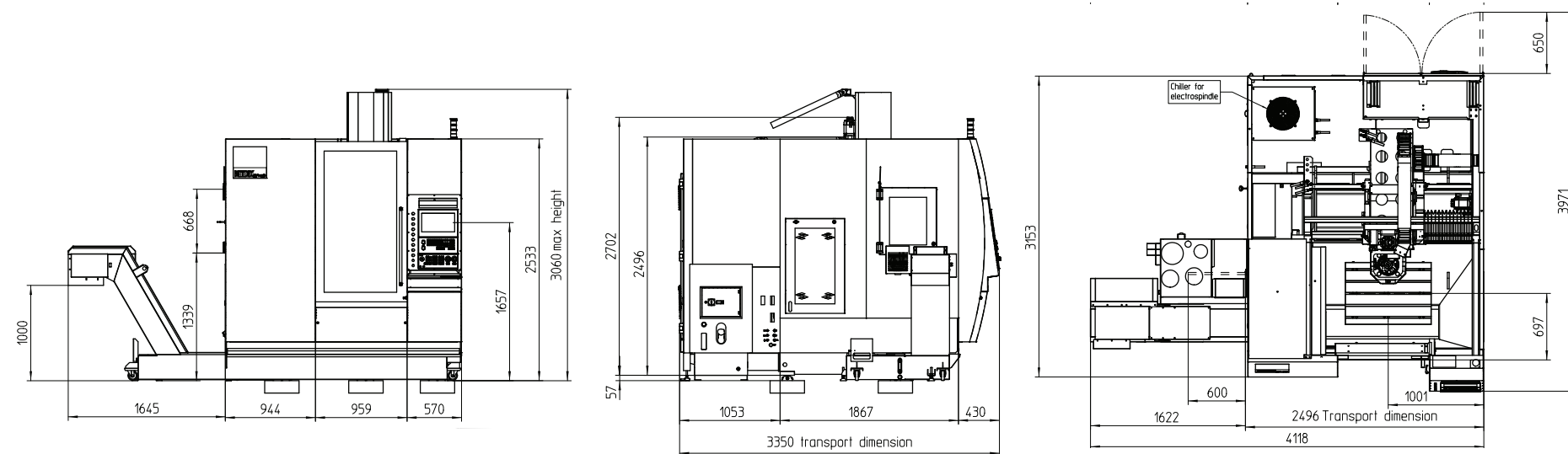
EMCOMILL 1200



Details in millimeters

INSTALLATION PLAN

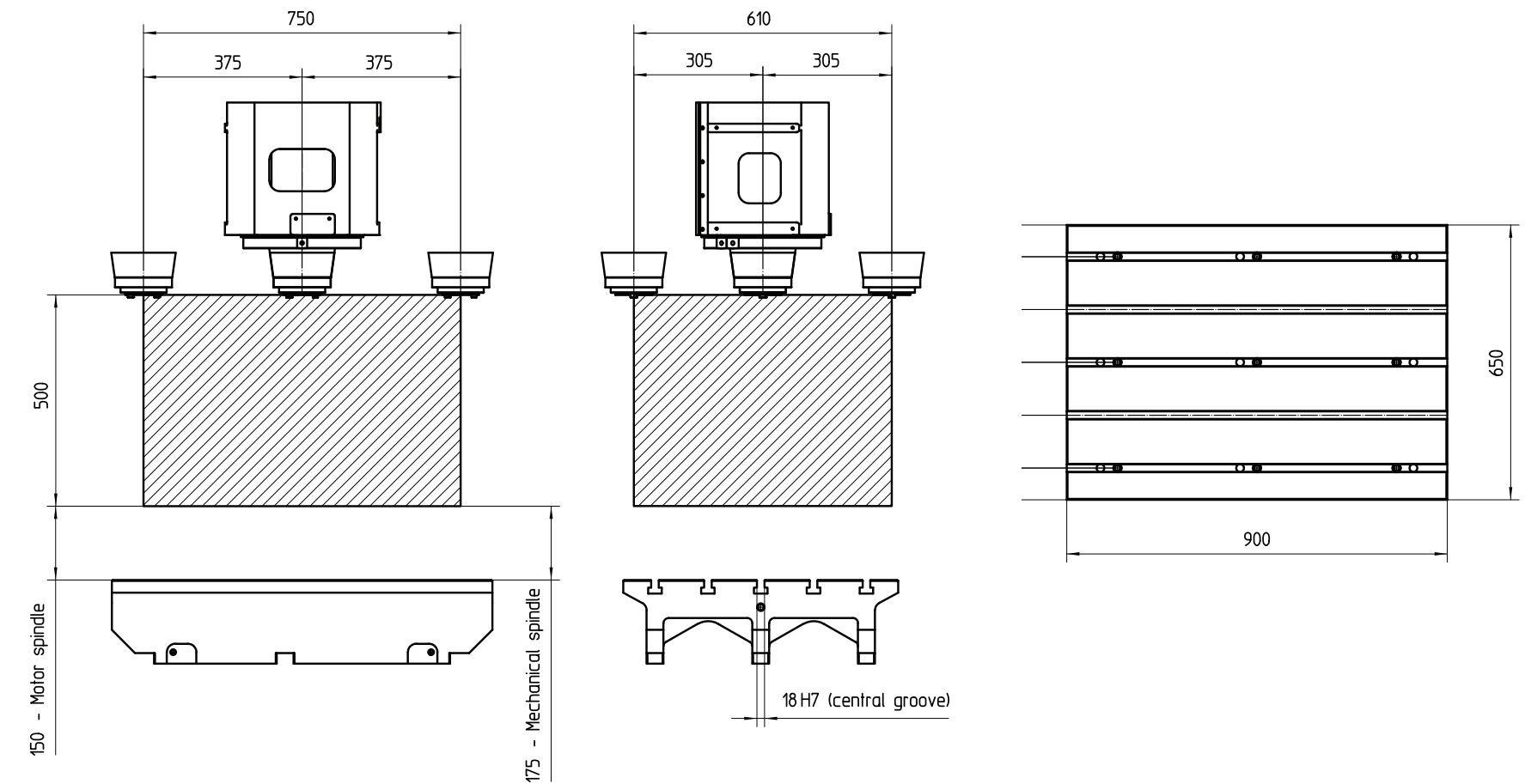
EMCOMILL 750



Details in millimeters

WORK AREA

EMCOMILL 750



Details in millimeters

EMCOMILL 750

TECHNICAL DATA

Work area	EMCOMILL 1800	EMCOMILL 1200	EMCOMILL 750
Travel in X-axis	1800 mm	1200 mm	750 mm
Travel in Y-axis	610 mm	610 mm	610 mm
Travel in Z-axis	500 mm	500 mm	500 mm
Min./max. spindle nose-table distance (mechanical spindle)	175 / 675 mm	175 / 675 mm	175 / 675 mm
Min./max. spindle nose-table distance (motor spindle)	150 / 650 mm	150 / 650 mm	150 / 650 mm

Table

Table dimensions length / width	2000 / 650 mm	1340 / 650 mm	900 / 650 mm
T-grooves: number, width, spacing	5 x 18 x 125 mm	5 x 18 x 125 mm	5 x 18 x 125 mm
Max. table load	2000 kg	1500 kg	800 kg
Distance table surface / floor	800 mm	800 mm	800 mm

Main spindle (direct drive)

Speed range	50 – 12000 rpm	50 – 12000 rpm	50 – 12000 rpm
Torque (S6)	100 Nm	100 Nm	100 Nm
Spindle motor power (S6)	15 kW	15 kW	15 kW
Tool holder (DIN 69871)	ISO 40 (BT 40)	ISO 40 (BT 40)	ISO 40 (BT 40)
Drive	Direct drive	Direct drive	Direct drive

Main spindle (motor spindle)

Speed range	50 – 15000 rpm	50 – 15000 rpm	50 – 15000 rpm
Torque (S6)	100 Nm	100 Nm	100 Nm
Spindle motor power (S6)	20 kW	20 kW	20 kW
Tool holder (DIN 69871)	ISO40 (BT40, HSK-A63)	ISO40 (BT40, HSK-A63)	ISO40 (BT40, HSK-A63)

Tool magazine	EMCOMILL 1800	EMCOMILL 1200	EMCOMILL 750
Number of tool stations	30 (40/60)	30 (40/60)	30 (40/60)
Tool change time (tool / tool)	2 sec.	2 sec.	2 sec.
Max. tool diameter	75 mm	80 mm	80 mm
Max. tool diameter (with empty station)	125 mm	125 mm	125 mm
Max. tool length	250 mm	250 mm	250 mm
Max. tool weight	8 kg	8 kg	8 kg

Axes

Rapid motion speed in X, Y, Z	30 m/min	30 m/min	30 m/min
Feed force in X, Y, Z	5000 N	5000 N	5000 N
Axis acceleration in X, Y, Z	3 m/s²	3 m/s²	3 m/s²

General data

Power supply	20 kVA	20 kVA	20 kVA
Overall height	3070 mm	3060 mm	3060 mm
Installation area W × D (without chip conveyor, with tank)	4420 x 3360 mm	3200 x 3350 mm	2770 x 3350 mm
Total weight of the machine	14000 kg	10000 kg	7500 kg
Compressed air required	6 bar	6 bar	6 bar

beyond standard /

EMCO GmbH / Salzburger Str. 80 / 5400 Hallein-Taxach / Austria / T +43 6245891-0 / F +43 624586965 / info@emco.at

www.emco-world.com