




WALRUS
PUMP

TPM Series

Multistage Centrifugal Pump

IE3 
Motor



**Better Life
Through Innovation**

Content

General Data	03
Performance Range	04
Performance Curves/Technical Data	
TPM 18T	05
TPM 25T	07
TPM 25T (Threaded)	09
TPM 50T	11

TPM Series Multistage Centrifugal Pump

50 Hz

Power: 2.2 - 7.5 kW
 Head: Up to 70 M
 Flow: Up to 1200 L/min
 Outlet: 2" - 4"
 Inlet: 2" - 4"

60 Hz

Power: 1.5 - 7.5 kW
 Head: Up to 77 M
 Flow: Up to 1500 L/min
 Outlet: 2" - 4"
 Inlet: 2" - 4"



Product Features

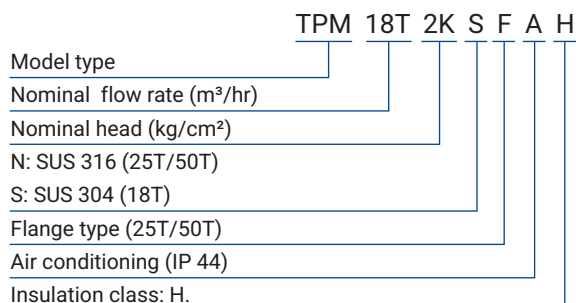
- The TPM Series is horizontal multistage centrifugal pump, non self-priming, co-axial pump/motor design, impellers mounted on extended motor shaft. Main working parts made by stainless steel.

Applications

Suitable for clean water/liquid without abrasive matters. The applications are versatile, such as pressure boosting, transfer, circulation, and machinery.

- Industrial circulation system
- Washing/cleaning system
- Pressure booster system
- Water/liquid transfer
- Agricultural irrigation

Model Code



Operating Conditions

- Ambient temperature: Max. +40°C
- Liquid temperature range: +0°C ~ +90°C
- Operating pressure: Max. 10 kg/cm²
- Inlet pressure: Max. 6 kg/cm²

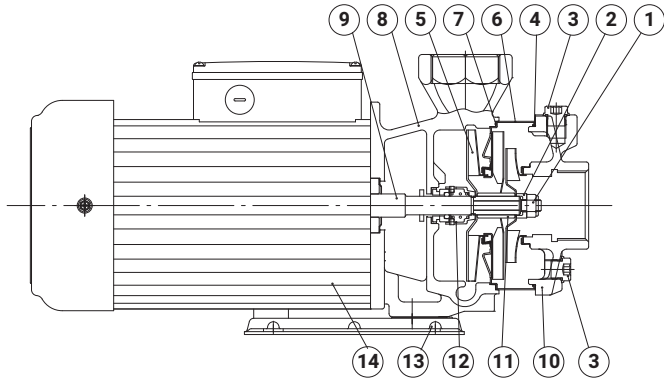
Motor

- Enclosure protection class: IP54
- Insulation class: F.
- Frequency range: 50/60 Hz
- Nominal speed: 2900/3500 rpm
- Voltages code:

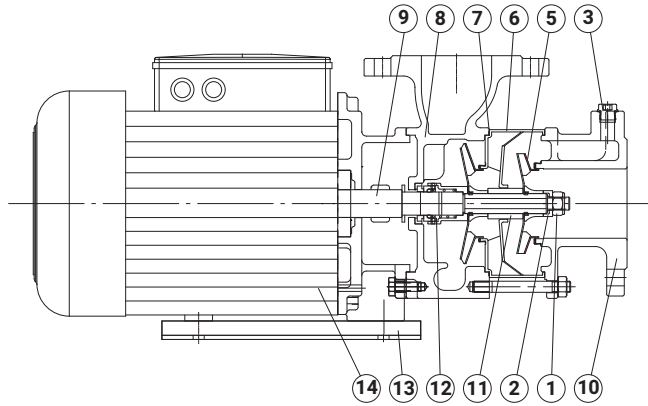
Code	PH	50Hz	60Hz
59U	3	220-240/380-415V	-
59V	3	200-230/342-380V	-
69U	3	-	220-255/380-440V
69V	3	-	220-240/380-440V

Sectional Drawing

TPM 18T



TPM 25/50T



Materials

NO.	Part Name	Material		
		Standard	S series	N series
1	Lock Nut	SUS 316	SUS 316	SUS 316
2	Sleeve(Shaft End)	SUS 316	SUS 316	SUS 316
3	Water Plug	SUS 304	SUS 304	SUS 316
4	O Ring	HNBR	HNBR	-
5	Impeller	SUS 304	SUS 304	SUS 316
6	Intermediate Chamber	SUS 304	SUS 304	SUS 316
7	Gasket	Teflon		
8	Pump Casing	FC 20	SUS 304	SUS 316
9	Shaft	SUS 304	SUS 304	SUS 316
10	Suction Chamber	FC 20	SUS 304	SUS 316
11	Sleeve	SUS 304	SUS 304	SUS 316
12	Mechanical Seal	HGSH		
13	Mounted Base	Coating Steel		
14	Motor Shell	Aluminum Alloy		

SUS 304 may be replaced by SUS 316, depending on stock availability.

Options on Request

■ Special mechanical seal

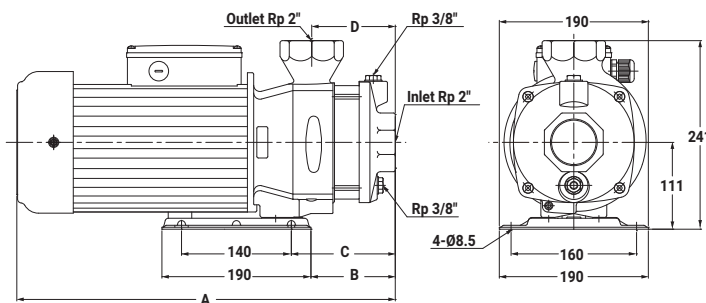
Mechanical seal type	Material	
	Stationary Face/ Rotary Face	Cup Gasket & O Ring
HGSH	(G)Carbon/ (S)Silicon carbide	(H) HNBR (V) Viton (E) EPDM
HGSV		
HGSE		
HSSH	(S)Silicon carbide/ (S)Silicon carbide	(H) HNBR (V) Viton (E) EPDM
HSSV		
HSSE		

Electrical Data, 50/60Hz

Model	PH Ø	Voltage code	Cycle Hz	Volts V	Output kW	Ampere I _{1/1} (A)	Service Factor	Ampere I _{max} (A)
TPM18T2K(S)	3	59V	50	200-230/342-380	2.2	9.5-10.5/5.5-5.6	1.1	10.2-10.9/5.9-5.9
TPM18T3K(S)	3	59V	50	200-230/342-380	3.0	12.2-13.1/7.1-7.1	1.1	13.4-14.0/7.9-7.8

Model	PH Ø	Voltage code	Cycle Hz	Volts V	Output kW	Ampere I _{1/1} (A)	Service Factor	Ampere I _{max} (A)
TPM18T2K(S)	3	69V	60	220-240/380-440	1.5	5.8-5.5/3.4-3.1	1.5	8.3-7.6/4.8-4.2
TPM18T2.5K(S)	3	69V	60	220-240/380-440	2.2	8.6-8.4/4.9-5.0	1.5	12.1-11.2/6.9-6.4
TPM18T4K(S)	3	69V	60	220-240/380-440	3.0	11.2-10.7/6.4-6.3	1.3	14.5-13.3/8.3-7.6

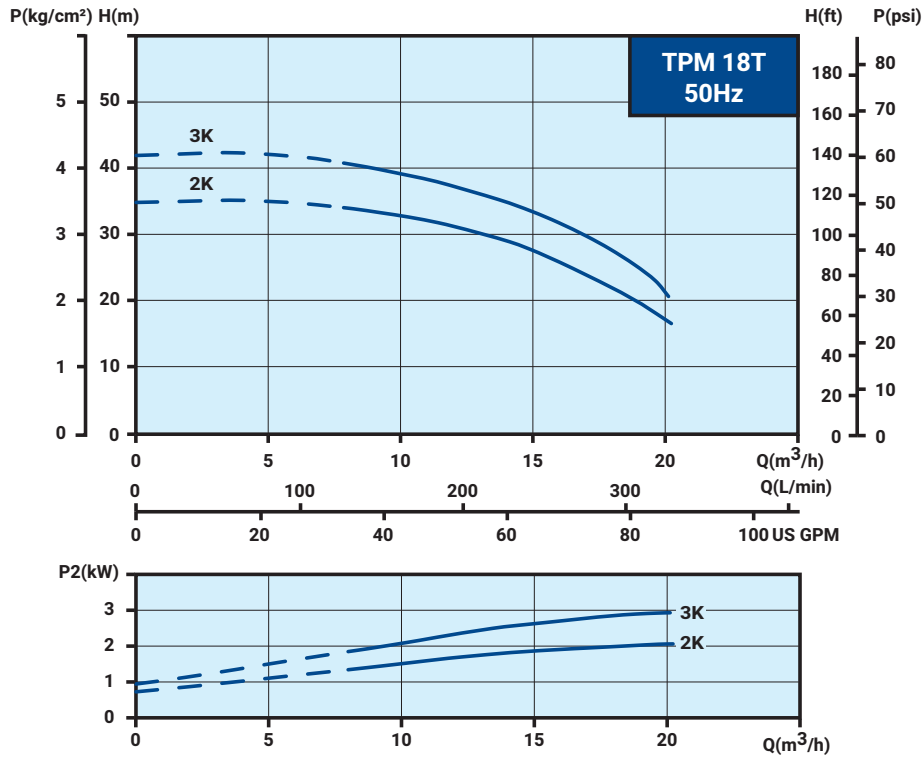
Dimensions



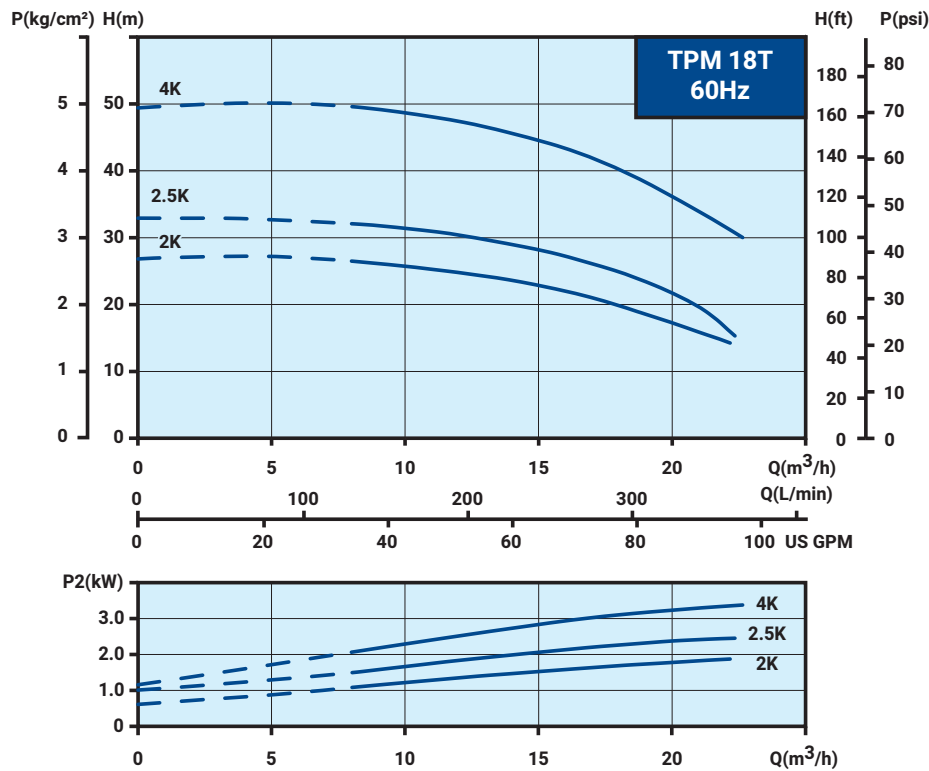
Model	Cycle Hz	A mm	B mm	C mm	D mm	N.W. kg
TPM18T2K(S)	50	458	108	133	107	31
TPM18T3K(S)	50	483	108	133	107	34

Model	Cycle Hz	A mm	B mm	C mm	D mm	N.W. kg
TPM18T2K(S)	60	404	76	101	75	27
TPM18T2.5K(S)	60	426	76	101	75	31
TPM18T4K(S)	60	483	108	133	107	34

Performance Curve, 50Hz



Performance Curve, 60Hz

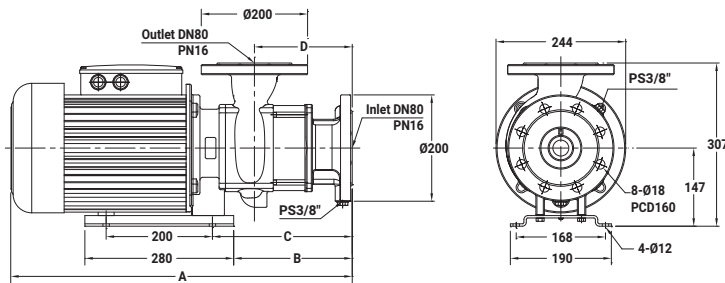


Electrical Data, 50/60Hz

Model	PH Ø	Voltage code	Cycle Hz	Volts V	Output kW	Ampere I _{1/1} (A)	Service Factor	Ampere I _{max} (A)
TPM25T2.5K(N)F	3	59U	50	220-240/380-415	4.0	16.0-16.6/9.0-9.5	1.1	17.4-17.5/9.7-10.1
TPM25T3K(N)F	3	59U	50	220-240/380-415	5.5	19.6-19.9/11.3-11.4	1.1	21.3-21.2/12.3-12.2
TPM25T4K(N)F	3	59U	50	220-240/380-415	5.5	19.6-19.9/11.3-11.4	1.1	21.3-21.2/12.3-12.2
TPM25T5K(N)F	3	59U	50	220-240/380-415	7.5	25.0-24.8/14.6-14.5	1.1	27.3-26.8/15.9-15.7

Model	PH Ø	Voltage code	Cycle Hz	Volts V	Output kW	Ampere I _{1/1} (A)	Service Factor	Ampere I _{max} (A)
TPM25T2K(N)F	3	69U	60	220-255/380-440	4.0	14.6-14.7/8.5-8.5	1.15	16.5-16.0/9.6-9.3
TPM25T3K(N)F	3	69U	60	220-255/380-440	4.0	14.6-14.7/8.5-8.5	1.15	16.5-16.0/9.6-9.3
TPM25T4K(N)F	3	69U	60	220-255/380-440	5.5	19.1-17.9/10.9-10.3	1.15	21.7-19.9/12.4-11.5
TPM25T5K(N)F	3	69U	60	220-255/380-440	7.5	25.4-24.4/14.7-14.1	1.15	28.9-27.1/16.7-15.8
TPM25T6K(N)F	3	69U	60	220-255/380-440	7.5	25.4-24.4/14.7-14.1	1.15	28.9-27.1/16.7-15.8

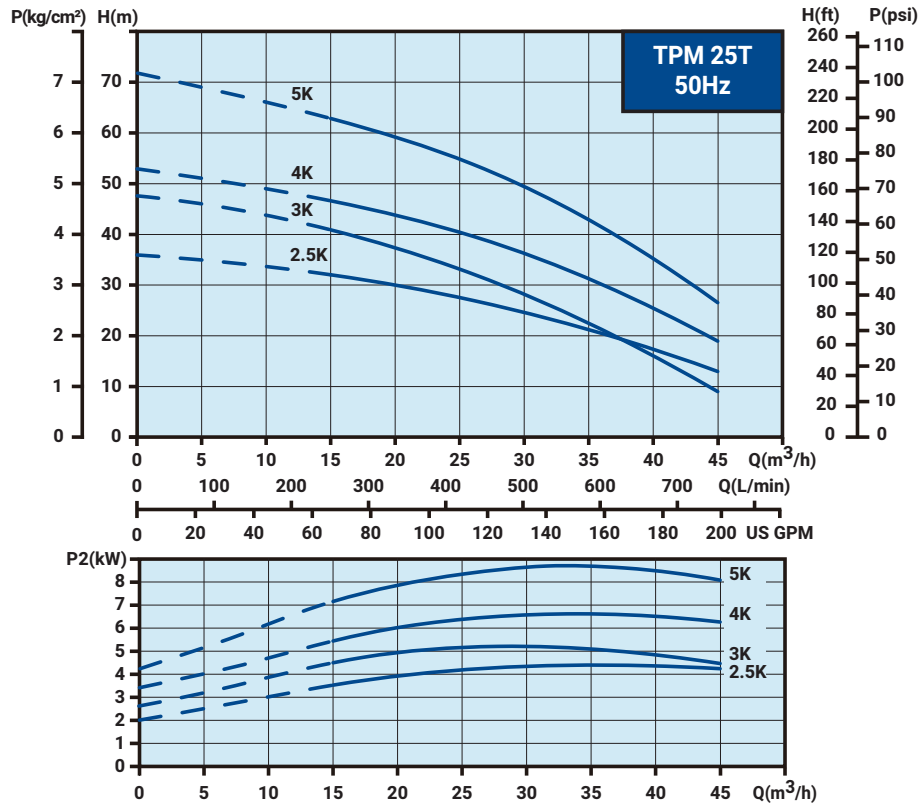
Dimensions



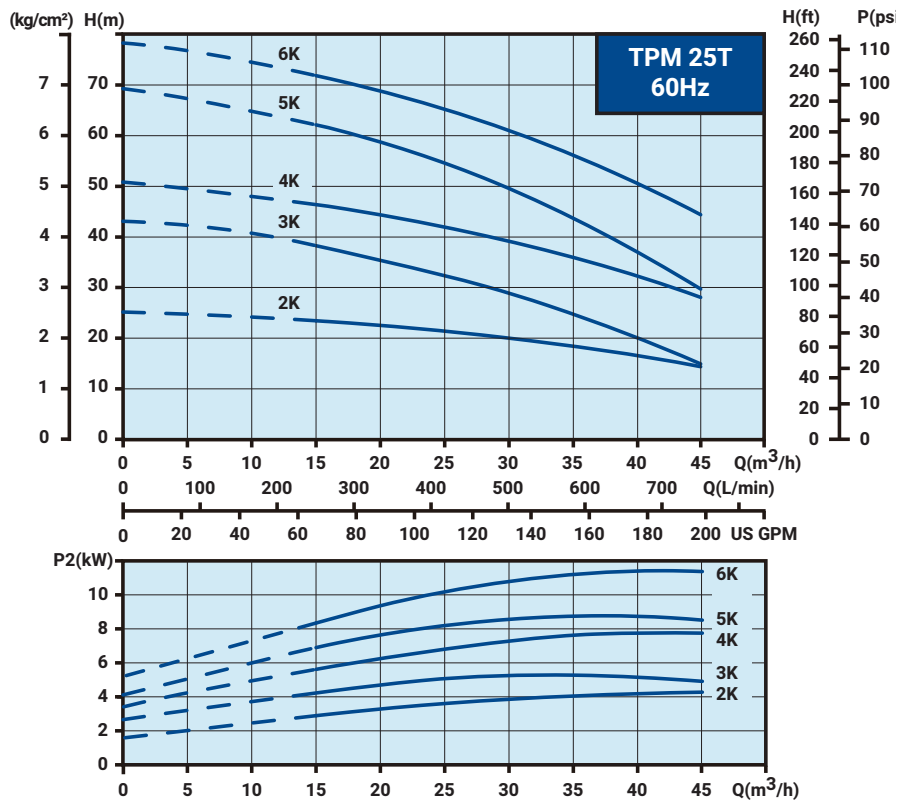
Model	Cycle Hz	A mm	B mm	C mm	D mm	N.W. kg
TPM25T2.5K(N)F	50	643	223	263	185	64.5
TPM25T3K(N)F	50	703	283	323	245	71.0
TPM25T4K(N)F	50	703	283	323	245	71.0
TPM25T5K(N)F	50	803	343	383	305	82.5

Model	Cycle Hz	A mm	B mm	C mm	D mm	N.W. kg
TPM25T2K(N)F	60	583	163	203	125	61.5
TPM25T3K(N)F	60	643	223	263	185	64.0
TPM25T4K(N)F	60	643	223	263	185	69.0
TPM25T5K(N)F	60	743	283	323	245	80.0
TPM25T6K(N)F	60	743	283	323	245	80.0

Performance Curve, 50Hz



Performance Curve, 60Hz

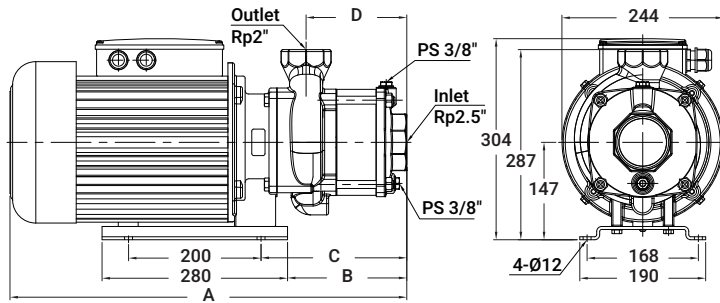


Electrical Data, Threaded, 50/60Hz

Model	PH Ø	Voltage code	Cycle Hz	Volts V	Output kW	Ampere I _{1/1} (A)	Service Factor	Ampere I _{max} (A)
TPM25T2.5K(N)	3	59U	50	220-240/380-415	4.0	16.0-16.6/9.0-9.5	1.1	17.4-17.5/9.7-10.1
TPM25T3K(N)	3	59U	50	220-240/380-415	5.5	19.6-19.9/11.3-11.4	1.1	21.3-21.2/12.3-12.2
TPM25T4K(N)	3	59U	50	220-240/380-415	5.5	19.6-19.9/11.3-11.4	1.1	21.3-21.2/12.3-12.2
TPM25T5K(N)	3	59U	50	220-240/380-415	7.5	25.0-24.8/14.6-14.5	1.1	27.3-26.8/15.9-15.7

Model	PH Ø	Voltage code	Cycle Hz	Volts V	Output kW	Ampere I _{1/1} (A)	Service Factor	Ampere I _{max} (A)
TPM25T2K(N)	3	69U	60	220-255/380-440	4.0	14.6-14.7/8.5-8.5	1.15	16.5-16.0/9.6-9.3
TPM25T3K(N)	3	69U	60	220-255/380-440	4.0	14.6-14.7/8.5-8.5	1.15	16.5-16.0/9.6-9.3
TPM25T4K(N)	3	69U	60	220-255/380-440	5.5	19.1-17.9/10.9-10.3	1.15	21.7-19.9/12.4-11.5
TPM25T5K(N)	3	69U	60	220-255/380-440	7.5	25.4-24.4/14.7-14.1	1.15	28.9-27.1/16.7-15.8
TPM25T6K(N)	3	69U	60	220-255/380-440	7.5	25.4-24.4/14.7-14.1	1.15	28.9-27.1/16.7-15.8

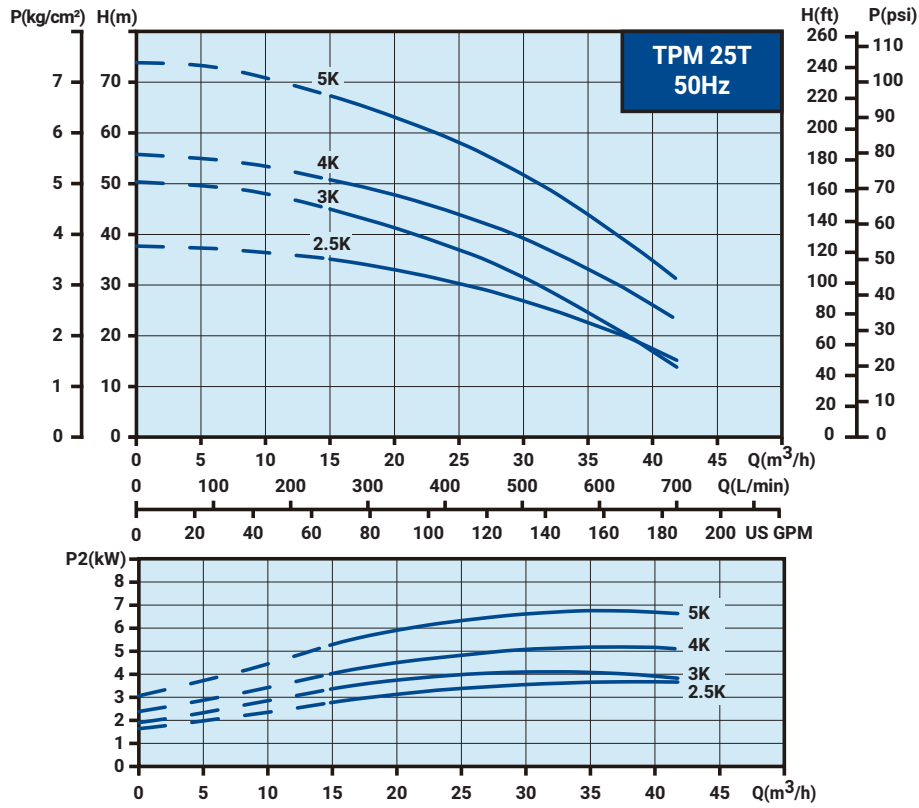
Dimensions, Threaded



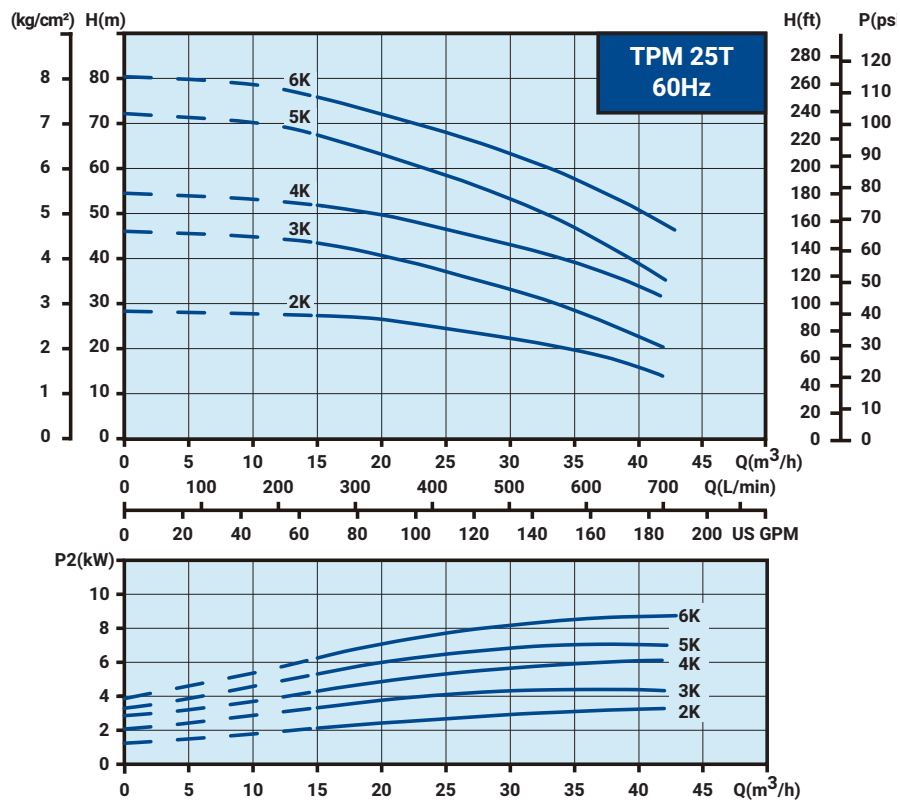
Model	Cycle Hz	A mm	B mm	C mm	D mm	N.W. kg
TPM25T2.5K(N)	50	559	180	220	152	59.0
TPM25T3K(N)	50	659	240	280	212	65.5
TPM25T4K(N)	50	659	240	280	212	65.5
TPM25T5K(N)	50	759	300	340	272	77.0

Model	Cycle Hz	A mm	B mm	C mm	D mm	N.W. kg
TPM25T2K(N)	60	539	120	160	92	56.0
TPM25T3K(N)	60	599	180	220	152	58.5
TPM25T4K(N)	60	599	180	220	152	63.5
TPM25T5K(N)	60	699	240	280	212	74.5
TPM25T6K(N)	60	699	240	280	212	74.5

Performance Curve, Threaded, 50Hz



Performance Curve, Threaded, 60Hz

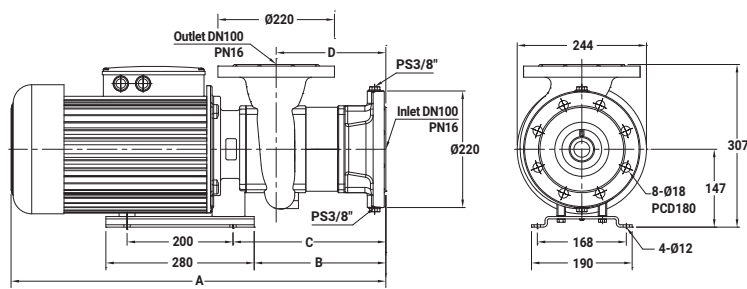


Electrical Data, 50/60Hz

Model	PH Ø	Voltage code	Cycle Hz	Volts V	Output kW	Ampere I _{1/1} (A)	Service Factor	Ampere I _{max} (A)
TPM50T2K(N)F	3	59U	50	220-240/380-415	5.5	19.6-19.9/11.3-11.4	1.1	21.3-21.2/12.3-12.2
TPM50T3K(N)F	3	59U	50	220-240/380-415	7.5	25.0-24.8/14.6-14.5	1.1	27.3-26.8/15.9-15.7

Model	PH Ø	Voltage code	Cycle Hz	Volts V	Output kW	Ampere I _{1/1} (A)	Service Factor	Ampere I _{max} (A)
TPM50T2.5K(N)F	3	69U	60	220-255/380-440V	5.5	19.1-17.9/10.9-10.3	1.15	21.7-19.9/12.4-11.5
TPM50T4K(N)F	3	69U	60	220-255/380-440V	7.5	25.4-24.4/14.7-14.1	1.15	28.9-27.1/16.7-15.8

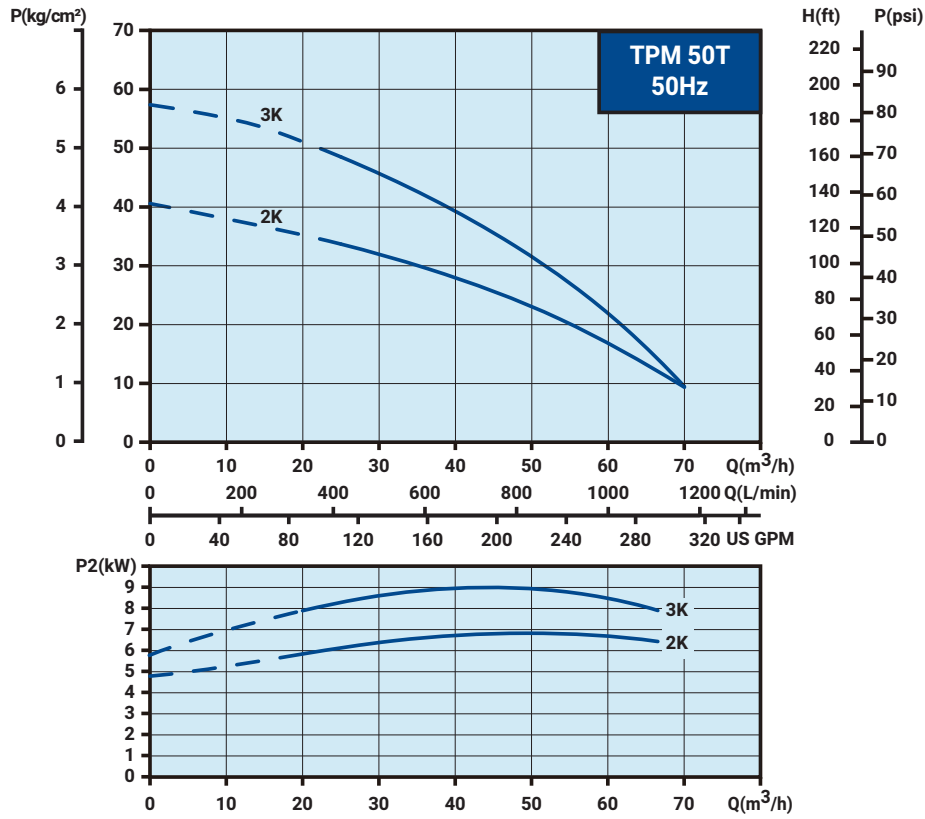
Dimensions



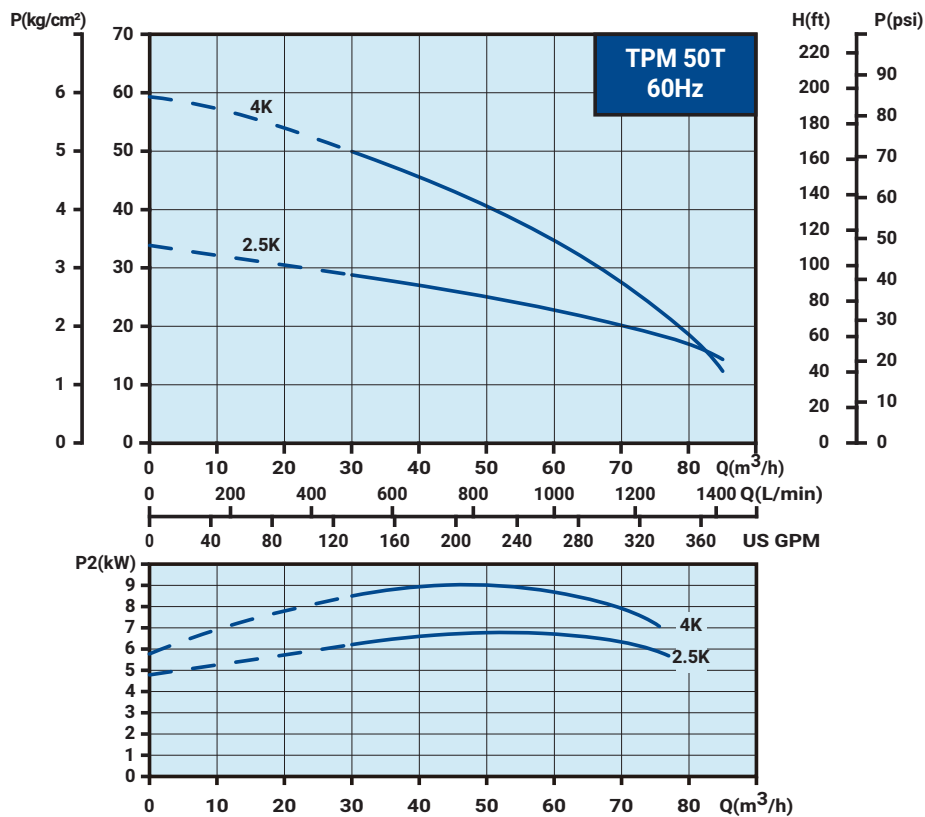
Model	Cycle Hz	A mm	B mm	C mm	D mm	N.W. kg
TPM50T2K(N)F	50	667	248	288	207	73.0
TPM50T3K(N)F	50	767	308	348	267	84.5

Model	Cycle Hz	A mm	B mm	C mm	D mm	N.W. kg
TPM50T2.5K(N)F	60	607	188	228	147	71.0
TPM50T4K(N)F	60	707	248	288	207	82.0

Performance Curve, 50Hz



Performance Curve, 60Hz



Memo



Memo



Memo





WALRUS
PUMP

WALRUS PUMP CO., LTD.

Head office: No.83-14, Dapiantou, Sanzhi Dist.,
New Taipei City 252, Taiwan

Tel: (+886) 2 2636-1123~7

Fax: (+886) 2 8635-4660

Email : walrus.sales@walrus.com.tw



All specifications are subject to change without notice. TPM-IE3-EN003b-202502

