



WALRUS
PUMP

TPAK Series

Coolant Pump

IE3-IE4
Motor 



Better Life
Through Innovation

TPAK Series Coolant Pump

50 Hz

Power: ¼ - 1.5 HP
 Head: Up to 12 M
 Flow: Up to 360 L/min
 Outlet: ½" - 1½"

60 Hz

Power: ¼ - 1.5 HP
 Head: Up to 17 M
 Flow: Up to 400 L/min
 Outlet: ½" - 1½"



Product Features

- The pump is one-chamber vertical centrifugal pump, co-axial pump/motor design, impellers mounted on extended motor shaft.

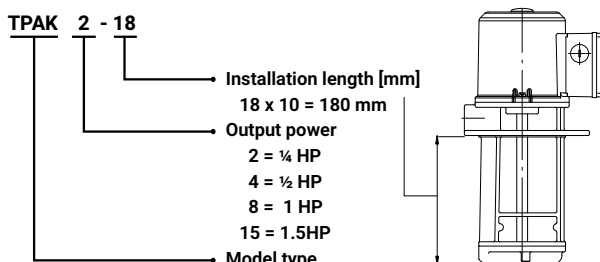
Applications

- The TPAK Series coolant pump is design for the circulation and spraying of cooling lubricants, especially for machine tools.
- This series may use on all machine tools performing Turning, Milling, Drilling, Cutting, Slitting, Grinding etc. operation.
- It is suitable to carry liquids such as water, coolant, light oil and other clean, non aggressive matters.

Operating Conditions

- Ambient temperature: Max. +40°C
- Liquid temperature range: +0°C ~ +90°C
- Operating pressure: Max. 10 kg/cm²

Model Code



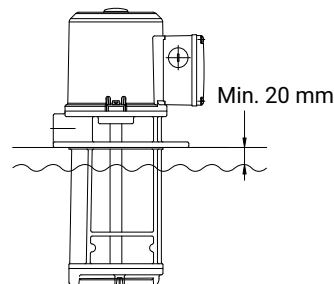
Motor

- Enclosure protection class: IP54
- Insulation class: F.
- Frequency range: 50/60 Hz
- Nominal speed: 2900/3500 rpm
- Standard voltages:

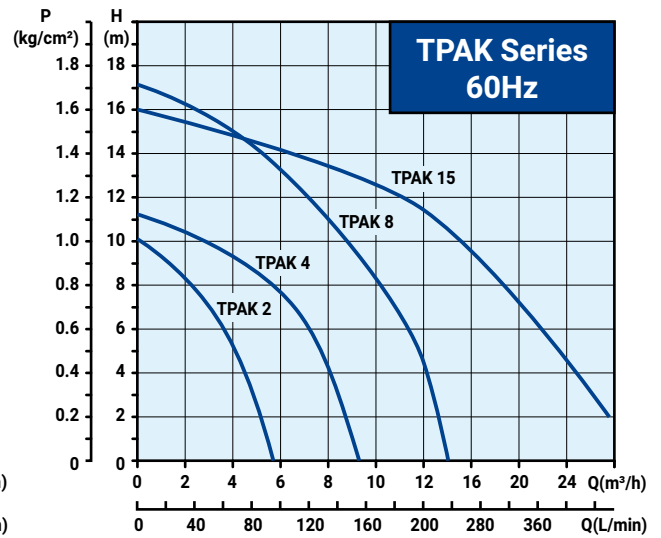
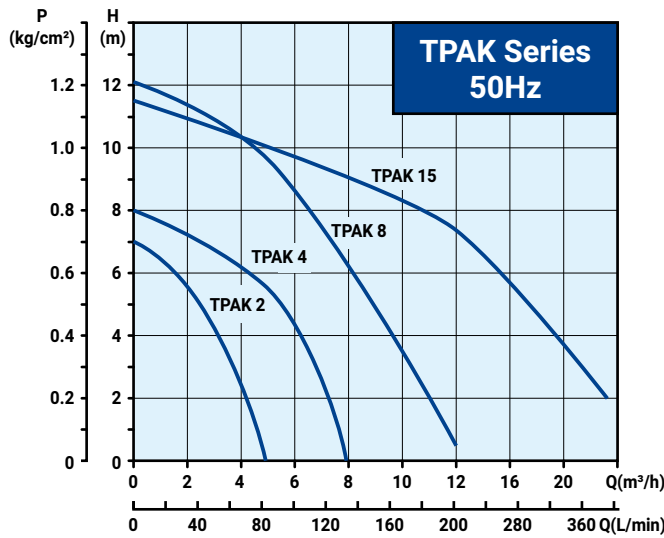
Code	PH	50Hz	60Hz
A3Z	3	200-255 / 380-440	200-255 / 380-480
A6V	3	200-230 / 342-415	220-240 / 380-480
A9V	3	200-230 / 342-380	220-240 / 380-440

Installation

Maximum liquid level



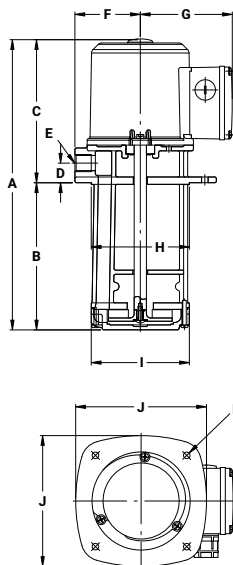
Performance Curve



Electrical Data

Model	PH Ø	Voltage code	Cycle Hz	Volts V	Output kW	Ampere I _{1/1} (A)	Service Factor	Ampere I _{max} (A)
TPAK 2	3	A3Z	50	200-255 / 380-440	0.18	1.0-1.2 / 0.6-0.7	1.2	1.1-1.3 / 0.7-0.8
			60	200-255 / 380-480		1.1 / 0.6	1.7	1.2 / 0.7
TPAK 4	3	A3U	50	200-240 / 380-415	0.37	1.8-2.0/1.0-1.2	1.1	1.9-2.1 / 1.1-1.2
			60	200-240 / 380-440		1.7-1.6/0.9-1.0	1.2	2.0-1.8 / 1.0-1.0
TPAK 8	3	A6V	50	200-230 / 342-415	0.75	3.5-3.6 / 2.0-2.2	1.1	3.8-3.8 / 2.2-2.3
			60	220-240 / 380-480		3.1-3.1 / 1.8-1.9	1.4	4.1-3.9 / 2.3-2.3
TPAK 15	3	A9V	50	200-230 / 342-380	1.1	5.2-6.0 / 3.0-3.2	1.1	5.5-6.2 / 3.2-3.3
			60	220-240 / 380-440		4.8-4.7 / 2.8-2.9	1.5	6.0-5.8 / 3.5-3.4

Dimensions



Model	A mm	B mm	C mm	D mm	E mm	F mm	G mm	H mm	I mm	J mm	K mm	N.W. kg	
TPAK 2-15	325	150	175	24	Rp 1/2"	80	113	Ø120	Ø120	160	4xØ8 PCD158	9.5	36
TPAK 2-18	355	180	175	24	Rp 1/2"	80	113	Ø120	Ø120	160	4xØ8 PCD158	10.0	36
TPAK 2-25	425	250	175	24	Rp 1/2"	80	113	Ø120	Ø120	160	4xØ8 PCD158	10.6	30
TPAK 4-15	386	150	236	28	Rp 3/4"	85	111	Ø135	Ø135	170	4xØ9 PCD170	11.2	30
TPAK 4-18	416	180	236	28	Rp 3/4"	85	111	Ø135	Ø135	170	4xØ9 PCD170	11.9	30
TPAK 4-25	486	250	236	28	Rp 3/4"	85	111	Ø135	Ø135	170	4xØ9 PCD170	12.7	24
TPAK 8-18	457	180	277	29	Rp 1"	95	111	Ø150	Ø150	190	4xØ9 PCD185	15.5	24
TPAK 8-25	527	250	277	29	Rp 1"	95	111	Ø150	Ø150	190	4xØ9 PCD185	17.1	24
TPAK 15-25	573.5	250	323.5	40	Rp 1 1/2"	122	127	Ø180	Ø180	200	4xØ9 PCD210	24.0	15



WALRUS
PUMP

WALRUS PUMP CO., LTD.

Head office: No.83-14, Dapiantou, Sanzhi Dist.,

New Taipei City 252, Taiwan

Tel: (+886) 2 2636-1123~7

Fax: (+886) 2 2636-3156

Email : walrus.sales@walrus.com.tw



All specifications are subject to change without notice. TPAK-IE3-EN000-202505

