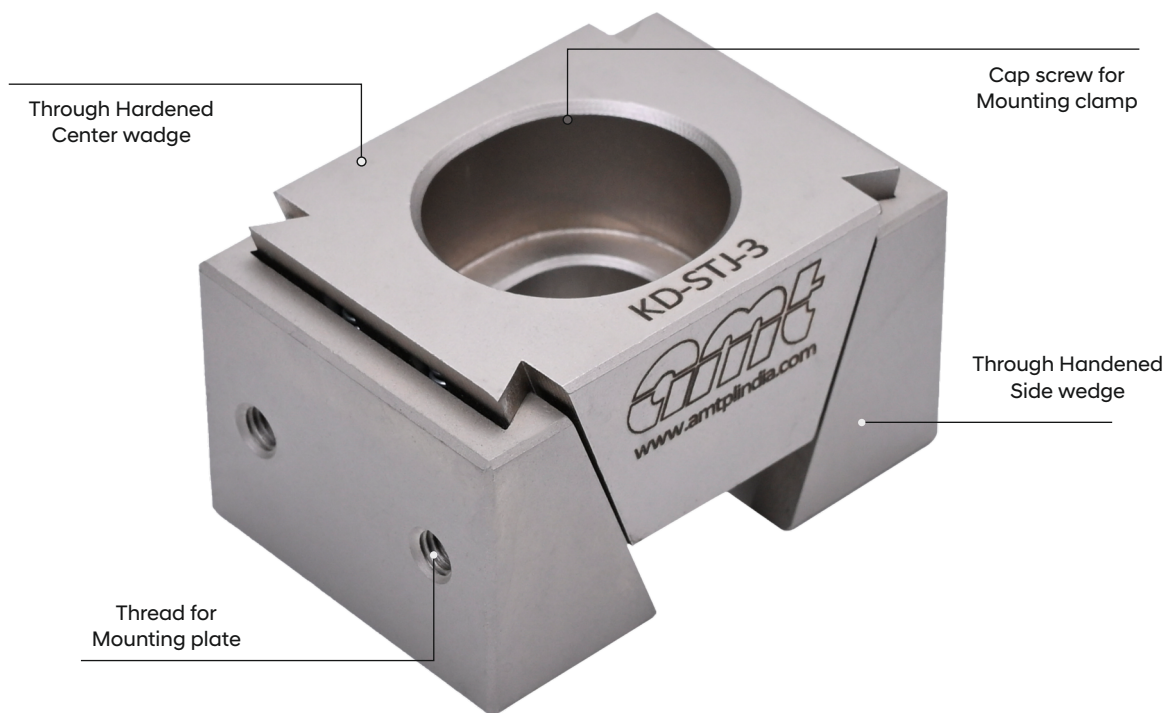
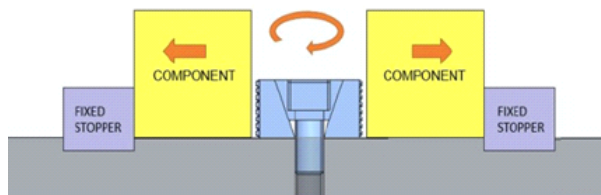


Working Principle

Wedge clamp functions on the principle that it expands as cap screw is tightened down which moves centre clamping wedge downwards and simultaneously both jaws slide outwards and clamp the work piece firmly. Tightening and loosening of cap screw will return the centre clamping wedge over an internal return spring to its original position so the clamping method is very effective and time saving



Application

- Generic & dedicated fixturing for VMC, HMC & 5 axis machines.
- For designing fixtures for inspection & quality labs.

Product Features

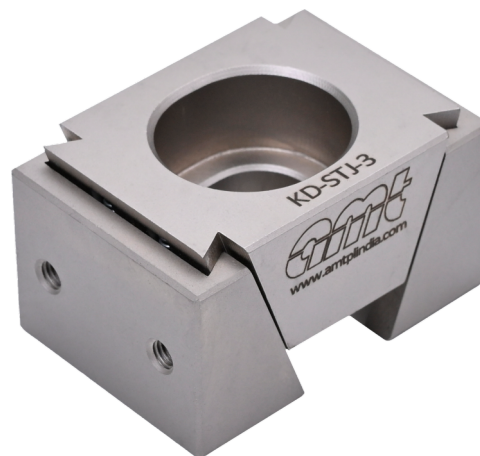
- Tool grade steel body.
- Hardened with electroless nickel plating.
- Expands evenly and apply balanced workholding pressure.
- Free tool access to the workpiece.
- Cross wedge structured design clamps workpiece firmly.
- Light in weight with quick setup time.
- Ideal for multiple clamping but also suitable for individual clamping.
- Chip free design (Internal return springs).



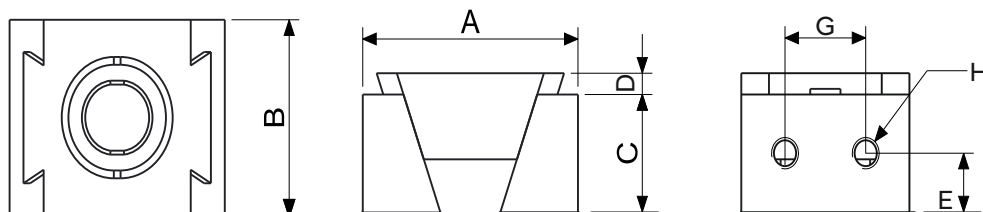
WEDGE CLAMP WITH STANDARD JAWS (KD-STJ)

Product Features

Wedge clamp is provided with smooth clamping face & fastening screw thread is provided to accommodate various additional customized jaws to workpiece geometry.



Wedge Clamp

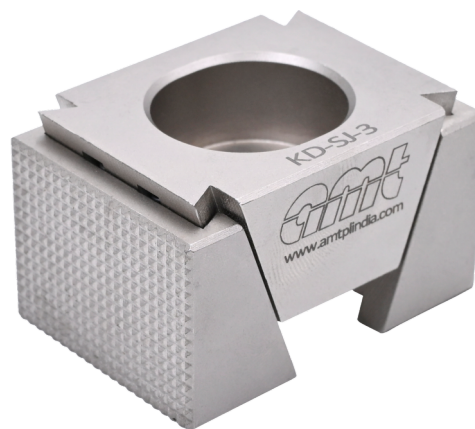
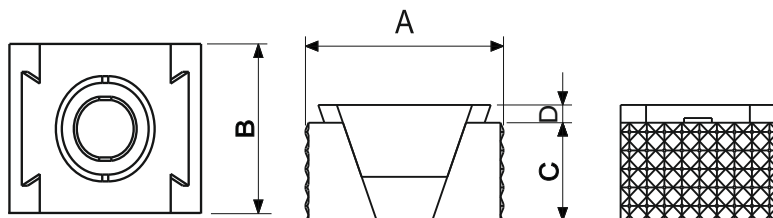


MODEL	A			B	C	D	E	G	H	CLAMPING SCREW (DIN 912)	TIGHTENING TORQUE (Nm)	CLAMPING FORCE (KN)	WEIGHT (gm)
	MIN	MEAN	MAX										
KD-STJ-1	32	34	36	25	15	4	7.5	12	4 X M4	M8	20	15	70
KD-STJ-2	42	45	48	30	24	4	11.5	12	4 X M4	M12	65	30	165
KD-STJ-3	56	60	64	40	30	4	15	24	4 X M5	M16	120	50	390

WEDGE CLAMP WITH STANDARD JAWS (KD-STJ)

Technical Specifications

Wedge clamp with serrated jaws is a special purpose clamp. Serrations on both sides of the jaws hold workpiece firmly in any condition as they create high friction.

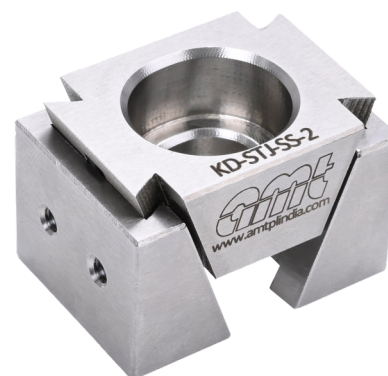


MODEL	A			B	C	D	CLAMPING SCREW (DIN 912)	TIGHTENING TORQUE (Nm)	CLAMPING FORCE (KN)	WEIGHT (gm)
	MIN	MEAN	MAX							
KD-SJ-1	32	34	36	25	15	4	M8	20	15	70
KD-SJ-2	42	45	48	30	24	4	M12	65	30	165
KD-SJ-3	56	60	64	40	30	4	M16	120	50	390

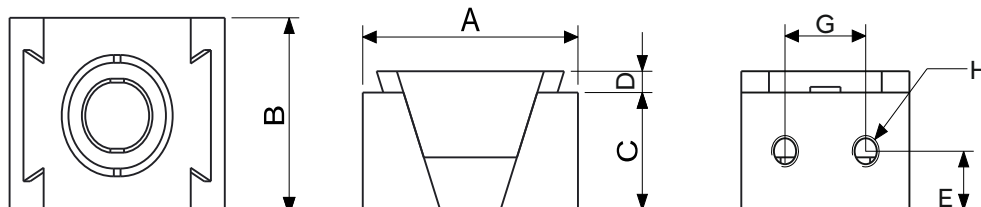
Note : Produce and promoted by AMT

Technical Specifications

- Wedge clamp is provided with smooth clamping face & fastening screw thread is provided to accommodate various additional customized jaws to work piece geometry.
- Special made in stainless steel (SS 304) Material for medical, surgical and food industries



Wedge Clamp



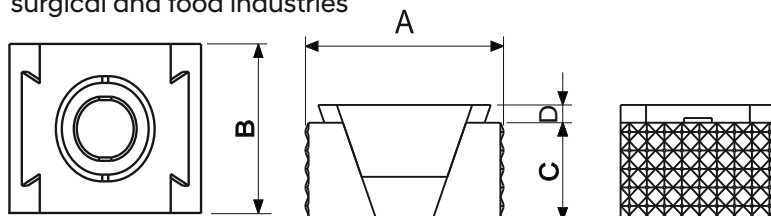
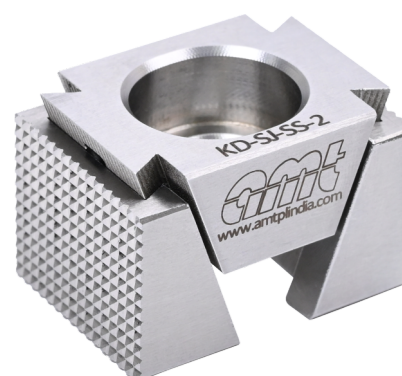
MODEL	A			B	C	D	E	G	H	CLAMPING SCREW (DIN 912)	TIGHTENING TORQUE (Nm)	CLAMPING FORCE (KN)	WEIGHT (gm)
	MIN	MEAN	MAX										
KD-STJ-SS-1	32	34	36	25	15	4	7.5	12	4 X M4	M8	20	15	70
KD-STJ-SS-2	42	45	48	30	24	4	11.5	12	4 X M4	M12	65	30	165
KD-STJ-SS-3	56	60	64	40	30	4	15	24	4 X M5	M16	120	50	390

- Note :** Without Hardened and electro less nickel plating

STAINLESS STEEL WEDGE CLAMP WITH SERRATION JAWS (KD-SJ-SS)

Technical Specifications

- Wedge clamp with serrated jaws is a special purpose clamp. Serrations on both sides of the jaws hold workpiece firmly in any condition as they create high friction.
- Special made in stainless steel (SS 304) Material for medical, surgical and food industries



MODEL	A			B	C	D	CLAMPING SCREW (DIN 912)	TIGHTENING TORQUE (Nm)	CLAMPING FORCE (KN)	WEIGHT (gm)
	MIN	MEAN	MAX							
KD-SJ-SS-1	32	34	36	25	15	4	M8	20	15	70
KD-SJ-SS-2	42	45	48	30	24	4	M12	65	30	165
KD-SJ-SS-3	56	60	64	40	30	4	M16	120	50	390

- Note :** Produce and promoted by AMT



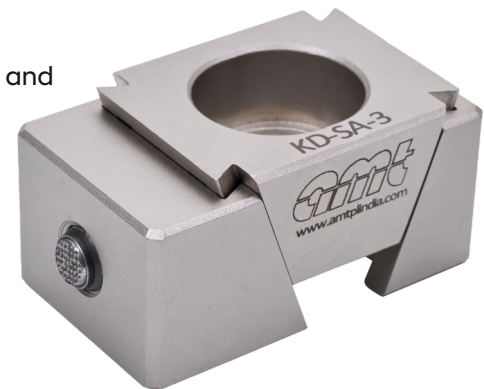
SELF ALIGNING WEDGE CLAMP

Scope of Application

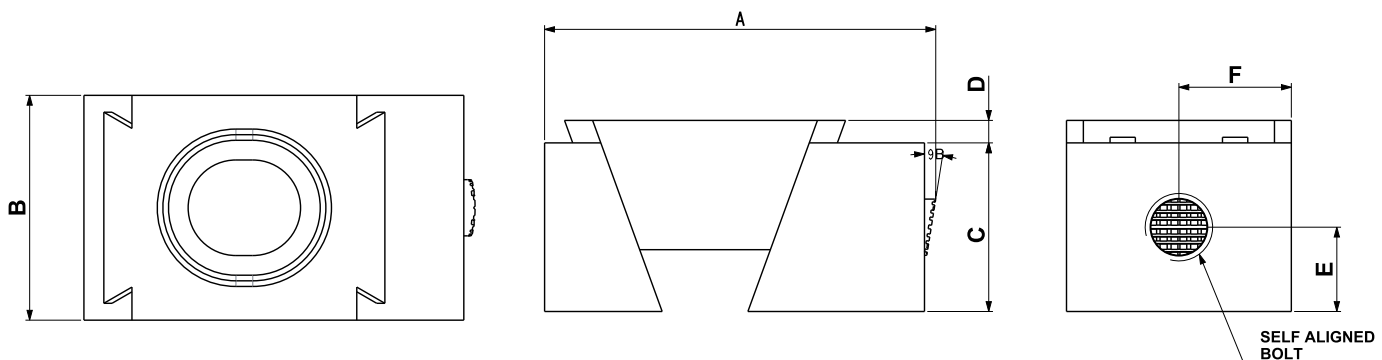
- A Self-Aligning Wedge Clamp is a mechanical device designed to aligning and securely clamp components.
- Easy, fast, and uniform clamping without requiring exact positioning.
- Dedicated fixturing for VMC, HMC & 5 axis machines.

Product Feature

- Aligning to the shape and position of the component.
- Eliminates the need for precise manual alignment.
- Free tool access to the work piece.
- Wedge mechanism ensures strong, uniform pressure.
- Ideal for multiple clamping but also suitable for individual clamping.



Wedge Clamp



Model	A (mm)			B	C	D	E	F	Aligning Angle	Clamping Screw	Tightening Torque (Nm)	Clamping Force (kN)	WEIGHT gm
	MIN.	MEAN	MAX.										
KD-SA-3	68	70.5	76	40	30	4	15	20	9°	M16	120	50	500

Note : Produce and promoted by AMT