



PRECISION MACHINE VISE 125/160

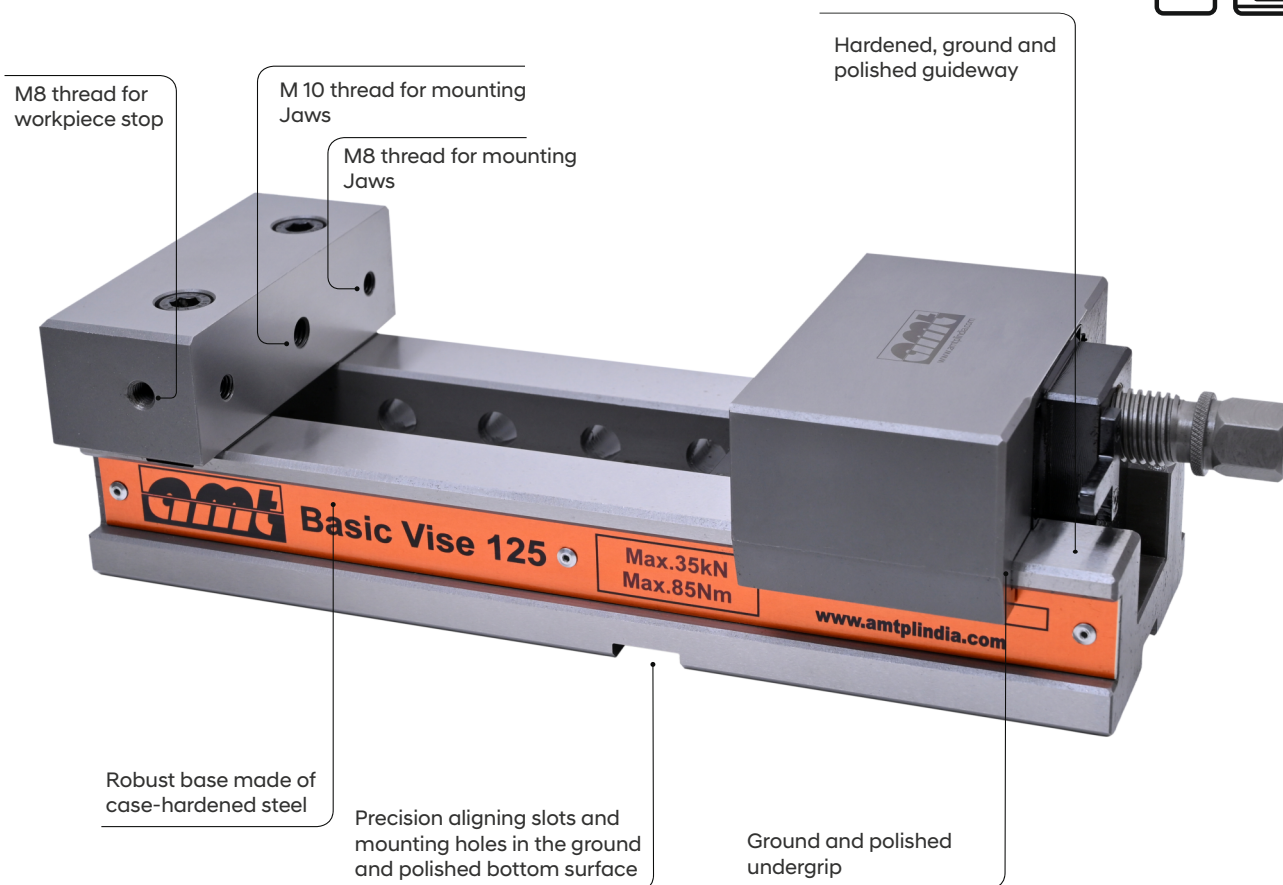
Scope of Application

- VMC machine - for efficient precision machining
- Horizontal installation - great variability and flexibility

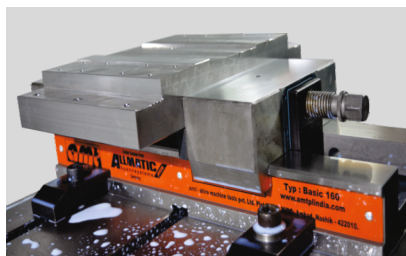
Product Features

- Alloy steel body & case hardened
- Excellent ease of operation guarantees optimal handling for every application
- Fast adjustment for clamping range presetting
- Operation with the ring wrench supplied

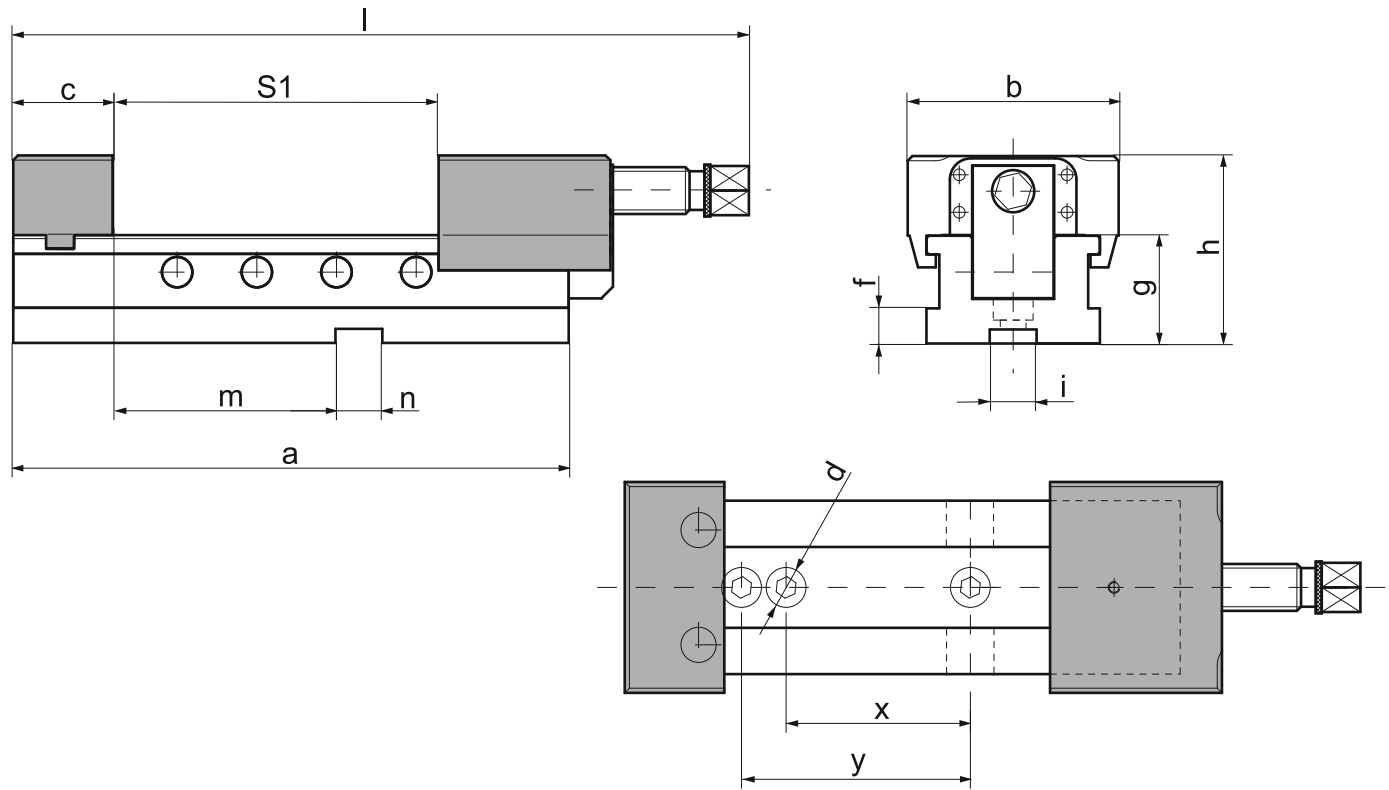
- Reproducible clamping forces are achieved using a torque wrench
- Integrated scrapers ensure functional reliability and minimise cleaning
- Fixing on the machine table by means of mounting holes in the vise base. Additional holes can be made in the soft middle section of the vise base
- Optional centre jaw allows two or more work pieces to be clamped



Application Image



Technical Data



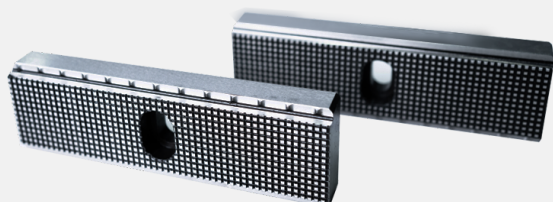
Variant		Basic 125	Basic 160
Dimensions/ Tolerances in mm	a	310	405
	b	124	160
	c	50	66
	d	13	13
	f	15	15
	g	48	56
	h	87.5	105.5
	i	20	20
	l	426	483
	m	120	128
	n	20	20
	x	100	100
	y	125	125

Variant	Basic 125	Basic 160
Clamping range S1 in mm	1-208	1-283
Torque in Nm	85	120
Max. clamping force in KN	35	50
Weight in kg	13.5	26

Scope Of Supply

- Basic Vise With Clamping Jaws - 1 No.
- Universal Jaw Assembly - 1 Set
- Work Piece Stopper - 1No.
- Click Parallel 3thk x ht 35mm -1 Set
- Side Clamp - 4 Nos.
- Combination Spanner-19mm - 1 No.
- T-type Allen Key-6mm - 1 No.
- Tenon 20x16 - 2 No.

Universal Jaws (Set)

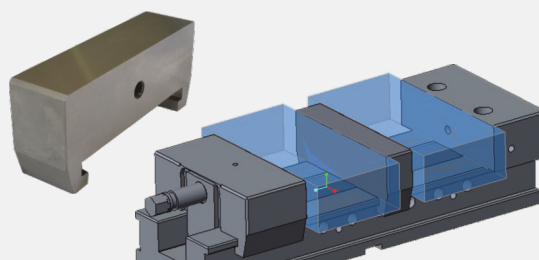


Universal combination jaws with

- Step
- Serrations
- Integrated gripper row

* In Standard scope of supply

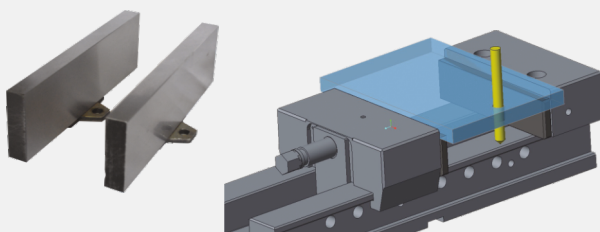
Intermediate Jaws



- For clamping two or more work pieces
- Installation between fixed and movable jaws of the vise

* On Request

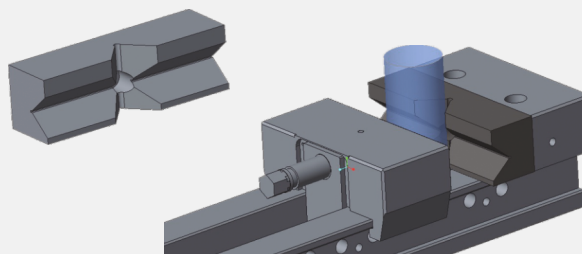
Click Parallel (Set)



	125	160
Sizes in mm	10X25	10X25
Sizes in mm	10X35	10X44
Sizes in mm	3X35	3X44

* In Standard scope of supply

Prismatic Jaws

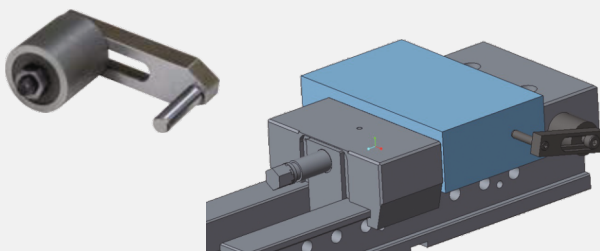


- Jaws for clamping round parts Vertically and Horizontally

	125	160
Horizontal	dia 12 - 28	dia 15 - 40
Vertical	dia 18 - 55	dia 22 - 65

* On Request

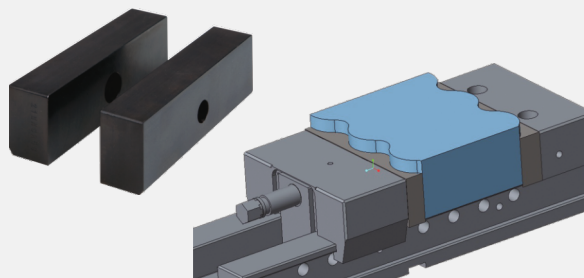
Workpiece Stop



- Can be mounted on either side of the vise in the designated positions
- Position of the third workpiece axis can be preset and clamped
- Can be pre-mounted with various fixed dimensions.

* In Standard scope of supply

Soft Jaw (set)



- For production of special jaws by the customer for Profile or irregular Shape workpiece
- Case-hardened steel 20MnCr5 material

* On Request