



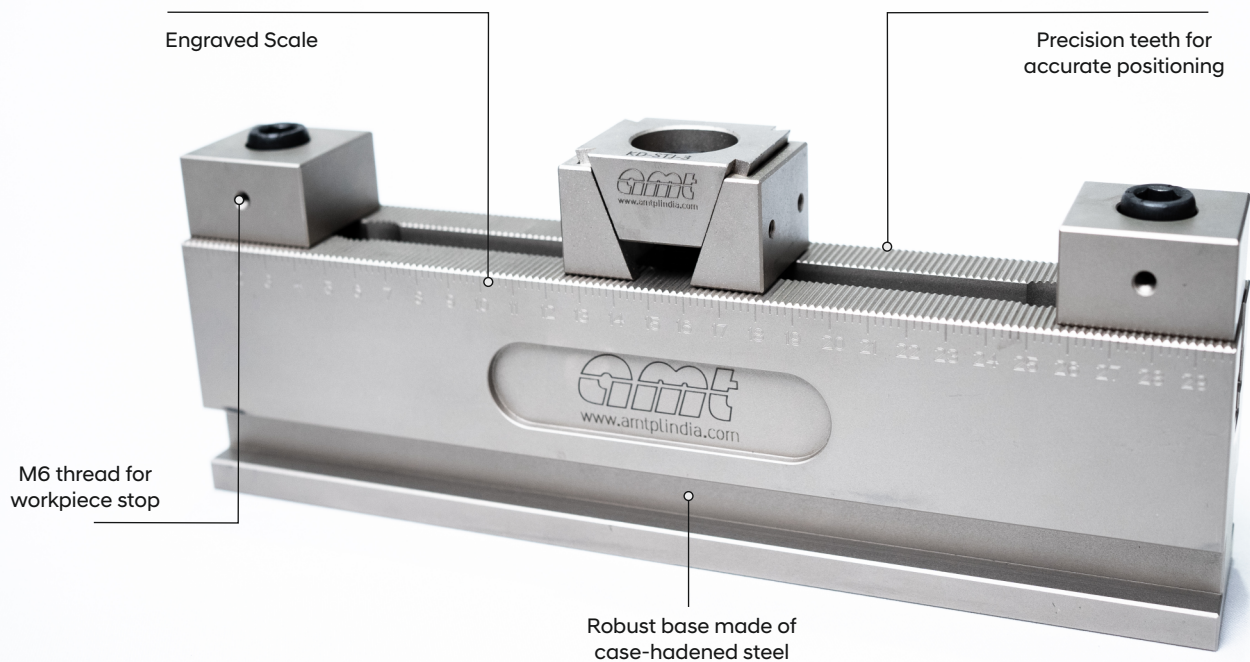
RAIL VISE

Application

AMT Rail vise features a range of components that are suitable for clamping different work piece types, sizes and materials on all types of work holding platforms and machining centers.

Product Features

- AMT Rail vise are highly flexible, and they quickly and easily clamp multiple small or large work pieces.
- Can be used on VMC/4th axis/HMC machine-for efficient precision machining
- Horizontal installation - great variability and flexibility
- Modularly constructed clamping system, which has its advantages in the versatile application possibilities.
- Through use of a wide array of fixed jaws and wedge clamps, this clamping system is adapted to your needs.
- Riser blocks/parallels. These are used to lift up the workpiece from base.
- Reproducible clamping forces are achieved using a torque wrench.
- Reproducible clamping range is achieved using scale.



RAIL VISE BODY

Application

- Optionally designed for one or more workpieces.
- For rapid clamping of work pieces for machine processing. Through use of a wide array of fixed stops and wedge clamps, this clamping system is adapted to your needs.

Product Features

- Alloy steel body & case hardened 58 to 62 HRC.
- Excellent ease of operation guarantees optimal handling for every application
- Fast adjustment for clamping range pre-setting through precision scale marking.
- Accurate positioning and alignment because of the rack teeth provided on both the body and the fix jaws.
- Rack teeth pitch accuracies (+/-0.02 mm).
- Operation with the Allen key.



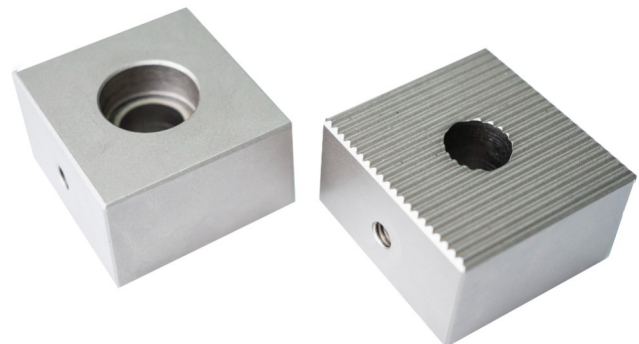
FIXED CLAMPING JAW WITH STANDARD & SERRATED SURFACE

Application

- The fixed stop is positioned on the clamping rail via the tightening bolt and grips, positively interlocked, on the 2 mm serration.
- Workpieces can be positioned and clamped with great clamping force.

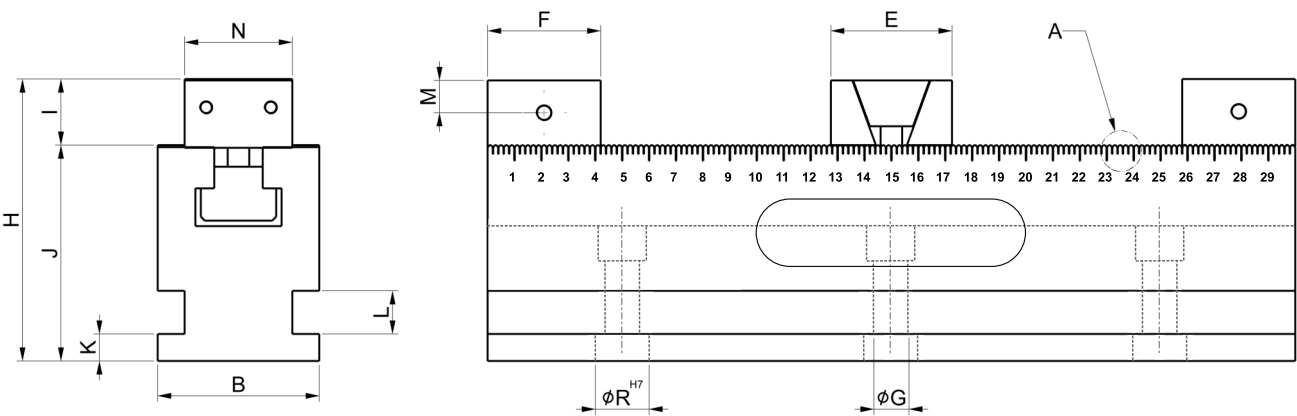
Product Features

- Alloy steel body & case hardened 58 to 62 HRC.
- Excellent ease of operation guarantees optimal handling for every application.
- Provision to fix workpiece stop.



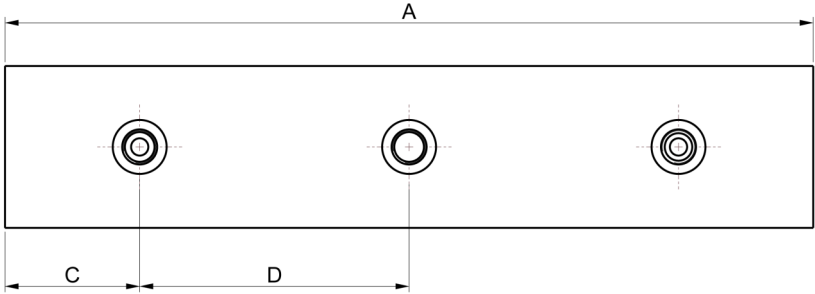
Technical Data

Rail Vice



Scope Of Supply

- Rail Body 300/500 - 1 Nos.
- Fix Jaw – STJ - 2/3 Nos.
- Wedge Clamp With Standard Jaw KD-STJ-2/KD-STJ-3 - 1/2 Nos.
- Side Clamp-RL - 4/6 Nos
- Workpiece Stopper Plate-RL - 2/3 Nos.



MODEL	A	B+/-0.05	C	D+/-0.01	E	F	G	H	I	J	K	L	M	N	R
KD-STJ-2 RL-300	300	60	50	100	42	42	13	105.5	25.5	80	15	16	12	40	20
KD-SJ-2 RL-300	300	60	50	100	42	42	13	105.5	25.5	80	15	16	12	40	20
KD-STJ-3 RL-500	500	60	50	200	60	42	13	110.5	30.5	80	15	16	12	40	20
KD-SJ-3 RL-500	500	60	50	200	60	42	13	110.5	30.5	80	15	16	12	40	20

AMT
RAIL VICE
ACCESSORIES

STEP JAW



Suitable for through machining.
Maximum tool access to the work piece.

WORK PIECE STOPPER



Lateral stop for positioning work pieces.
Stop is screwed to the fixed jaw and
can be moved.

POSITIONING BUSH



For Precision positioning & quick aligning
Hardened & ground

SIDE CLAMP



For mounting of the clamping rail
on the machine table with slots.

APPLICATION IMAGES

