



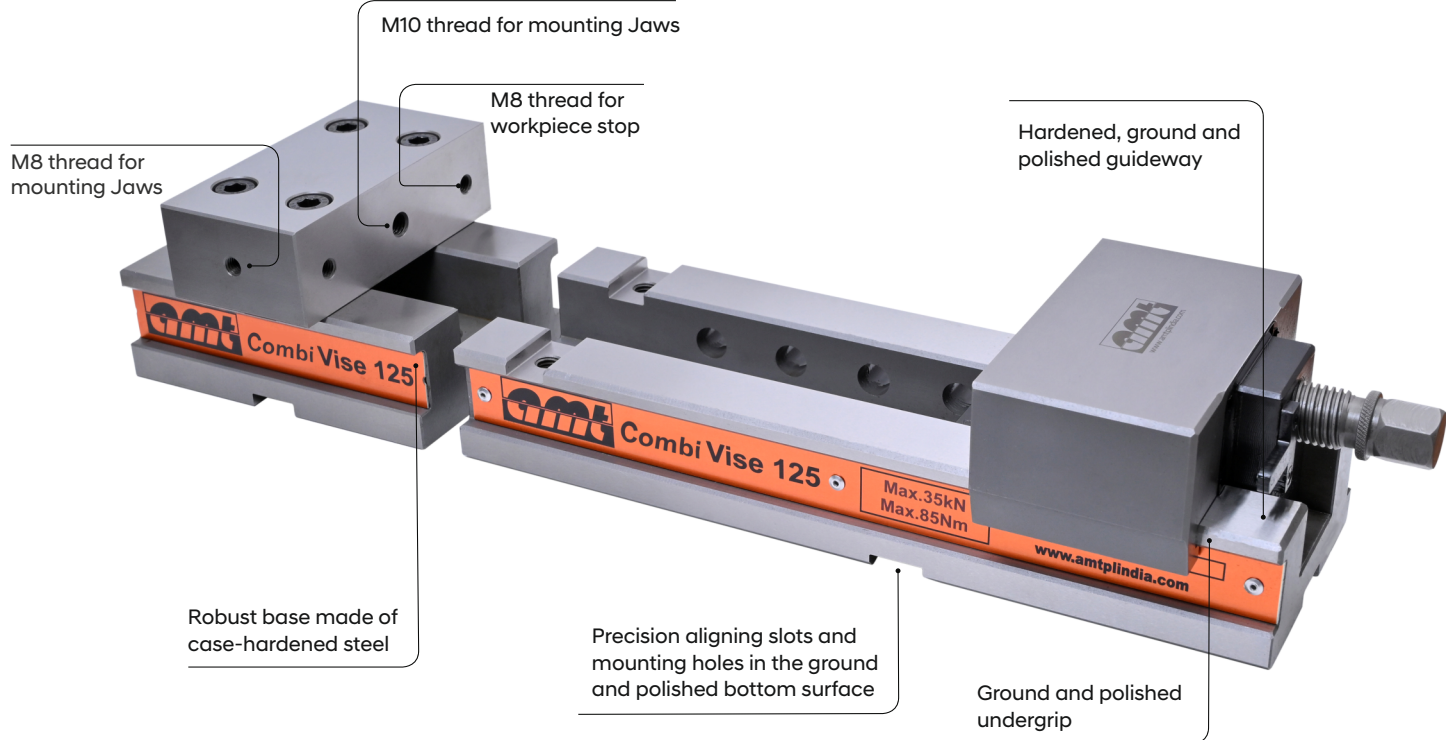
COMBINATION VISE 125/160

Scope Of Application

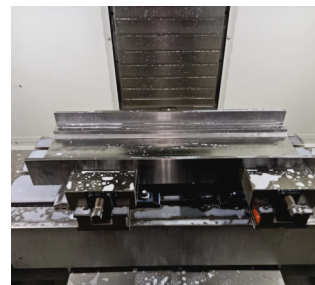
- Conventional and CNC controlled heavy duty milling machines

Product Features

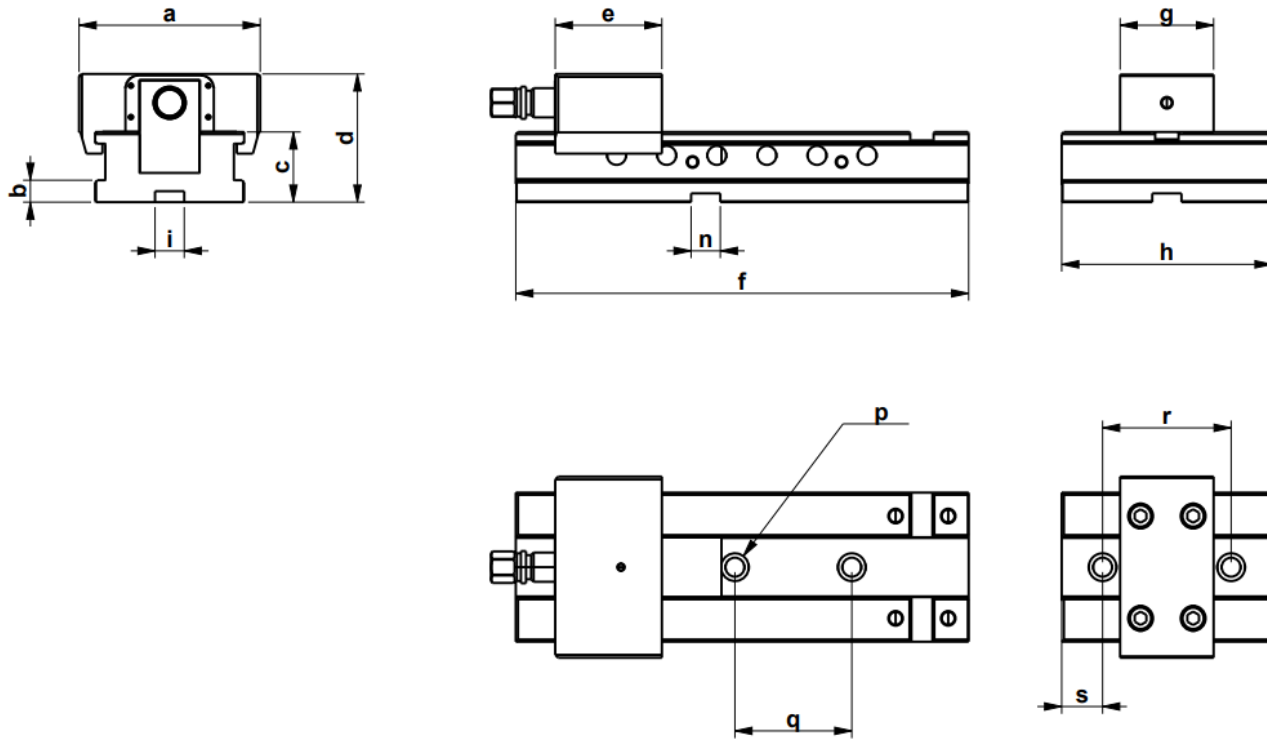
- Alloy steel body and case hardened
- Excellent ease of operation guarantees optimal handling for every application
- Fast adjustment for clamping range presetting
- Operation with the ring wrench supplied
- Reproducible clamping forces are achieved using a torque wrench
- Integrated scrapers ensure functional reliability and minimise cleaning
- Allow perfect clamping even of big workplace which need the heaviest machining using machine table as surface
- Manufactured under rigid quality control, hence can maintain accuracy under most severe operating conditions
- Space saving design & easy to handle



Application Image



Technical Data



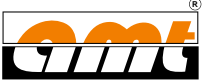
Combination Vise

Variant	Combi 125	Combi 160
Dimensions in mm	a	125
	b	15
	c	48
	d	87.5
	e	35
	f	310
	g	64
	h	150
	i	20
	n	20
	p	13
	q	80
	r	88
	s	40

Variant	Combi 125	Combi 160
Torque in Nm	85	120
Max. clamping force in KN	35	50
Weight in kg (2 Module)	48	56
Minimum clamping range in mm	87.5	105.5

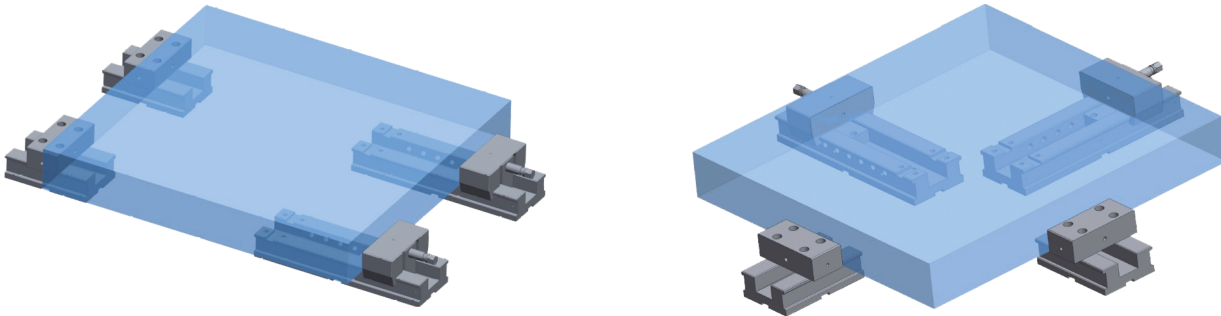
Scope of Supply

Description	1 Module	2 Module
Fix Jaw Unit 125/160	1 NO.	2 NO.
Extension body 125/160	1 NO.	2 NO.
Side clamp 125/160	8 NO.	16 NO.
Combination spanner-19mm	1 NO.	2 NO.
T-type allen key-6mm	1 NO.	2 NO.
Tenon 20X16 basic 125/160	4 NO.	8 NO.
Work piece stopper-basic	1 NO.	2 NO.
Universal Jaw 125/160	1 Set	2 Set

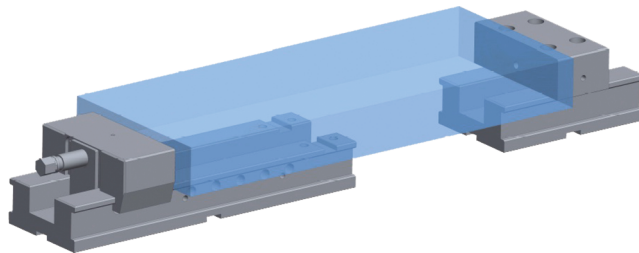


COMBINATION VISE EXAMPLES

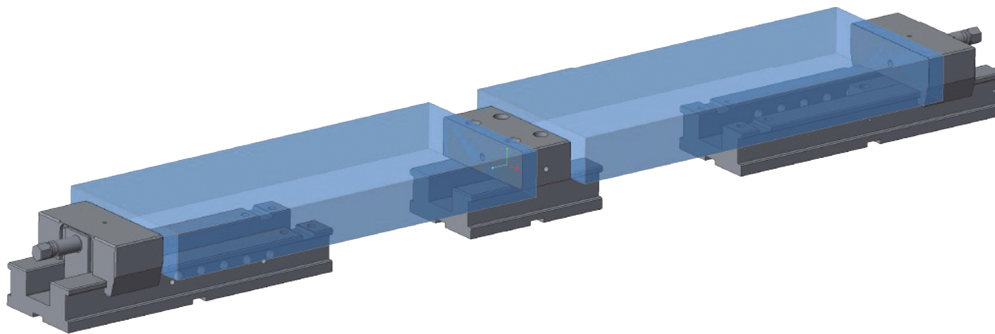
Medium sized workpieces, Blocks & Plates clamped on vise sections



Long workpiece clamped on vise section using extension of fix jaw.



Two workpieces with different sizes clamped on vise using one fix jaw & two movable jaw extensions.



Used as regular vise for holding smaller components.

